



TOGGLE CLAMPS





S Strength and Security
E Engineering Precision
C Customer Satisfaction

Sandfield Engineering Company was established in 1965 and has been manufacturing clamping equipment for over 47 years.

All the clamps are precision engineered and designed and manufactured with strength in mind to withstand harsh industrial environments and give long life in production.

Stainless steel models supplied if required.

Holding and Clamping Force

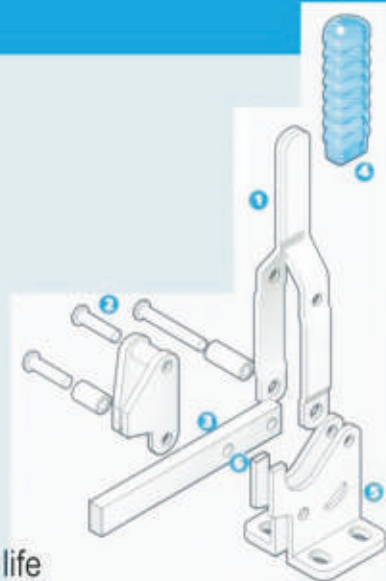
There are two types of clamp forces to consider when determining which clamp to use : holding force & clamping force.

The holding force is the maximum that the clamp can withstand before deformation (the reactionary force).

The clamping force is the force that the clamp will exert on the component or work piece. It is dependent on the effort applied to the clamp (e.g. the length of the clamp handle or the strength of the operator). So values of clamping force given in Sandfield's literature are only guides based on what an average person can apply.

TOGGLE CLAMP KEY FEATURES

- 1. Heavy Gauge Steel**
For increased strength and reliability.
- 2. Hardened Pins and Bushes**
To ensure and extended working life.
- 3. Zinc Plating**
For corrosion resistance.
- 4. Plastic Easy Grip Handles**
- 5. Positive Stop**
To ensure no finger trap
- 6. Guided Bar & Link Assemblies**
For Positive Location.
Frequent lubrication of clamps extends working life





INDEX

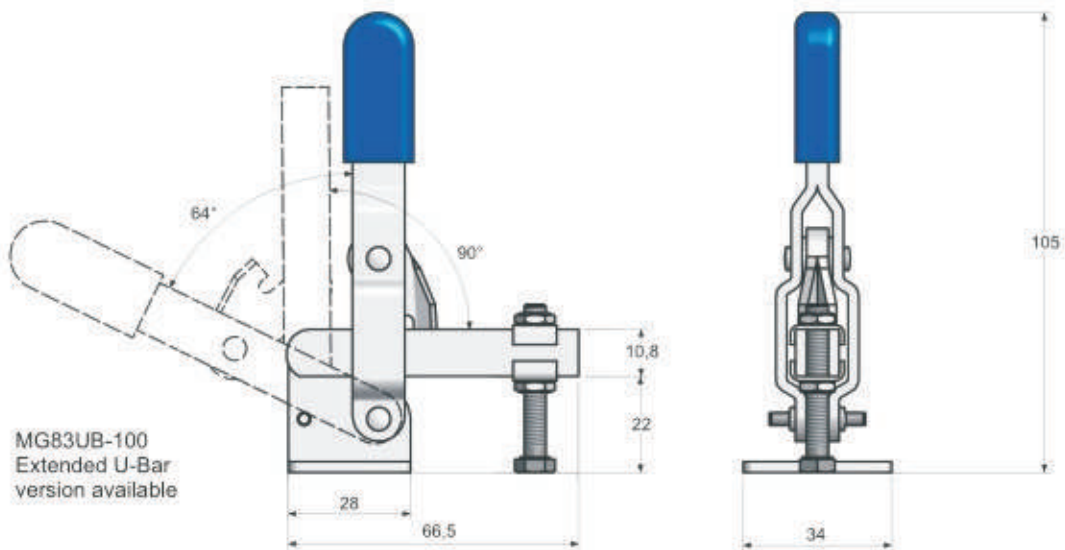
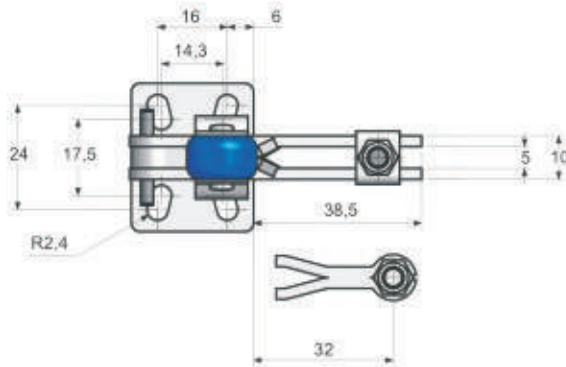
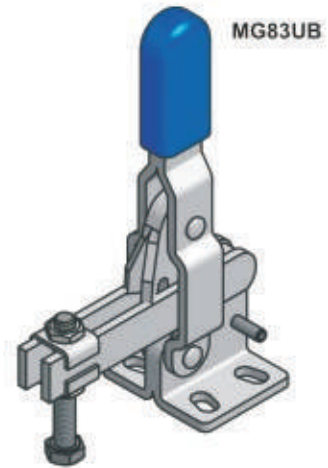
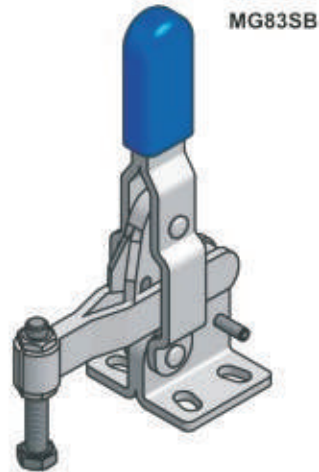
VERTICAL ACTION	
MG83SB, MG83UB	2
MG83S, MG83U	3
MG83SF, MG83UF	4
MG7, MG7B	5
MG3, MG3B	6
MG84SB, MG84UB	7
MG84SF, MG84UF	8
MG84S, MG84U	9
MG85, MG85B	10
MG86SB, MG86UB	11
MG86SF, MG86UF	12
MG86S, MG86U	13
MG2, MG2B	14
MG5, MG5B	15
PLUNGER ACTION	
CP15	16
CP16	17
CP44	18
CP50, CP60, CP50MB, CP60MB	19
CP8, CP8/90, CP7, CP7/90	20
CP9, CP9/90	21
HOOK CLAMP	
HC01, HC01SS	22
HC02, HC02SS	23
HC03, HC03SS	24
HC22H, HC22HSS, HC22V, HC22VSS	25
HC24H, HC24HSS, HC24V, HC24VSS	26
HC27H, HC27HSS, HC27V, HC27VSS	27
HC19	28
VERTICAL ACTION Ball Ended Series	
Handles Grips, Base, Clamp Bars	29
M18CH, M18SCH, M19CH, M19SCH, M20CH, M20SCH	30
M30CH, M30SCH	31
M17UB	32
VERTICAL ACTION Heavy Duty	
M18/T, M18TB, M18/S, M18SB, M18U, M18UB	33
M19/T, M19TB, M19/S, M19SB, M19/U, M19UB	34
M20/T, M20TB, M20/S, M20SB, M20/U, M20UB	35
M30/T, M30TB, M30/S, M30SB, M30/U, M30UB	36
HAND CLAMP	
M30-01/03, M20-01	37
HORIZONTAL ACTION	
MH1U/UB, MH2U/UB	38
MH4, MH4B, MH4U, MH4UB	39
MH6, MH6B, MH6U, MH6UB	40
HEAVY DUTY PNEUMATIC	
AV2200	41
HEAVY DUTY NEW ARRIVAL	
HTCH30, HTCH40, HTCH50	42
COPPER CARRIER	
FCC10, FCC10S	43
ACCESSORIES	44 & 45

VERTICAL ACTION

MG83



Material: Heavy gauge steel
 Finish: Zinc plated
 Supplied with: M5x35mm spindle
 Max holding force: 113daN
 Weight: 0.15Kgs
 Clamping pressure:

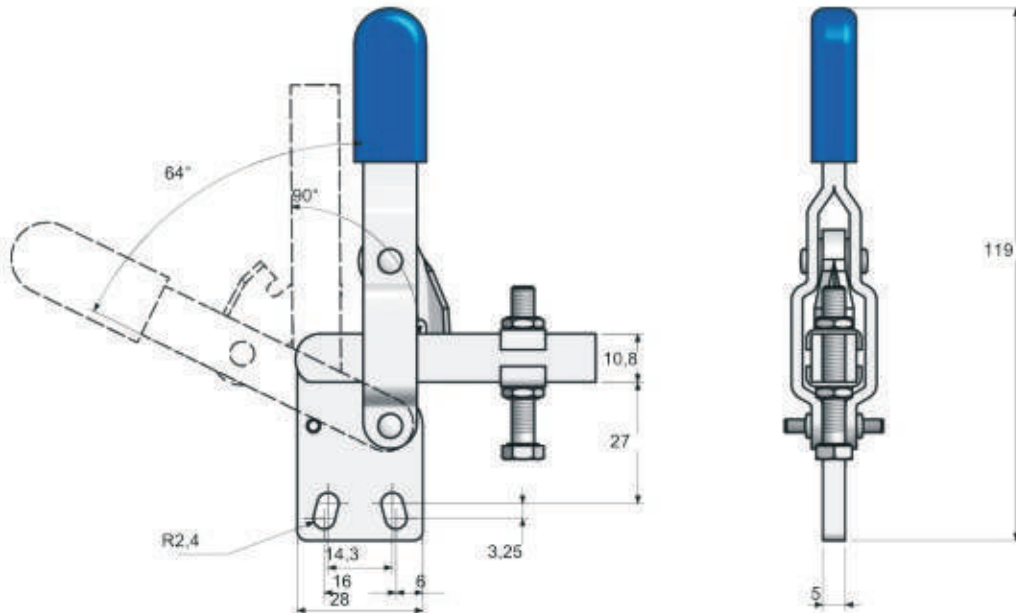
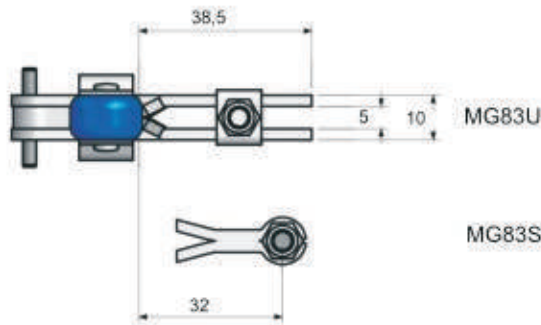
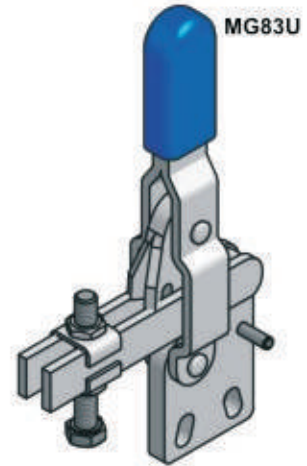
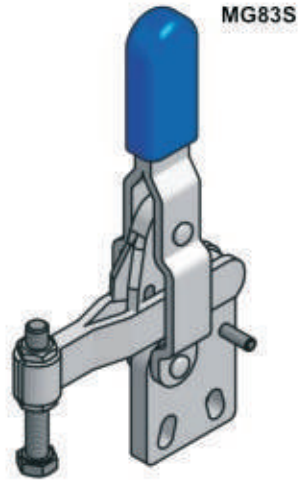
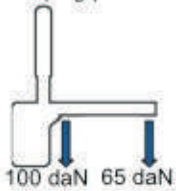


VERTICAL ACTION

MG83



Material: Heavy gauge steel
Finish: Zinc plated
Supplied with: M5x35mm spindle
Max holding force: 113daN
Weight: 0.15Kgs
Clamping pressure:



VERTICAL ACTION

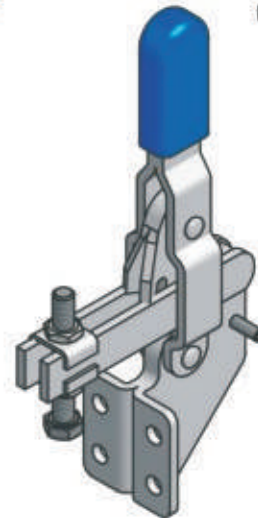
MG83



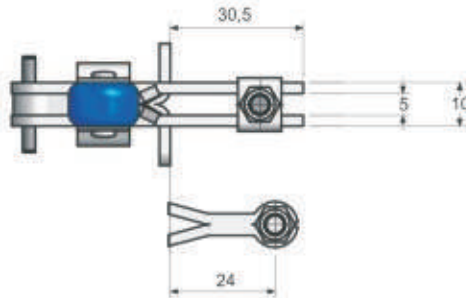
Material: Heavy gauge steel
 Finish: Zinc plated
 Supplied with: M5x35mm spindle
 Max holding force: 113daN
 Weight: 0.15Kgs
 Clamping pressure:



MG83SF

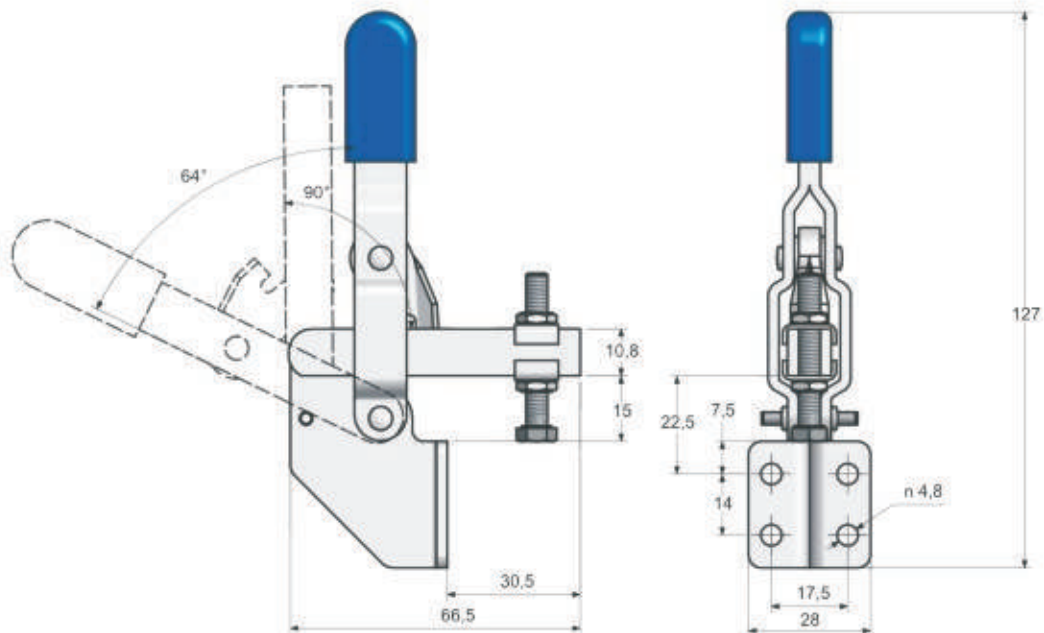


MG83UF



MG83UF

MG83SF

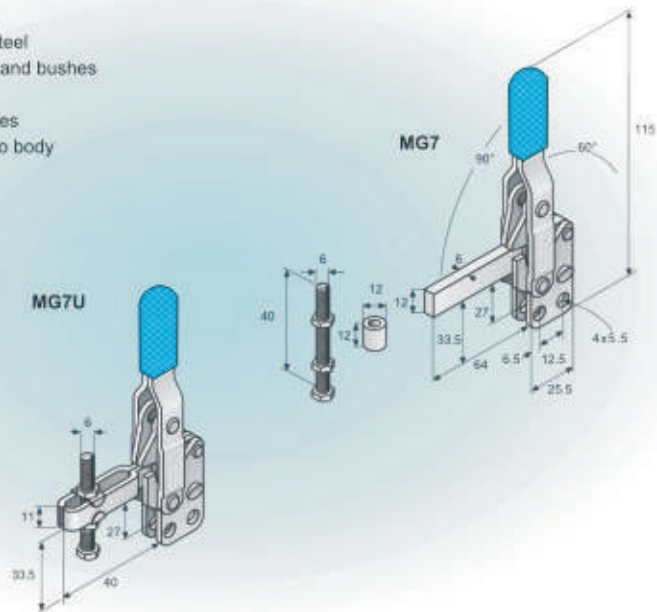
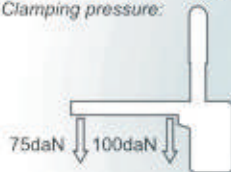


VERTICAL ACTION

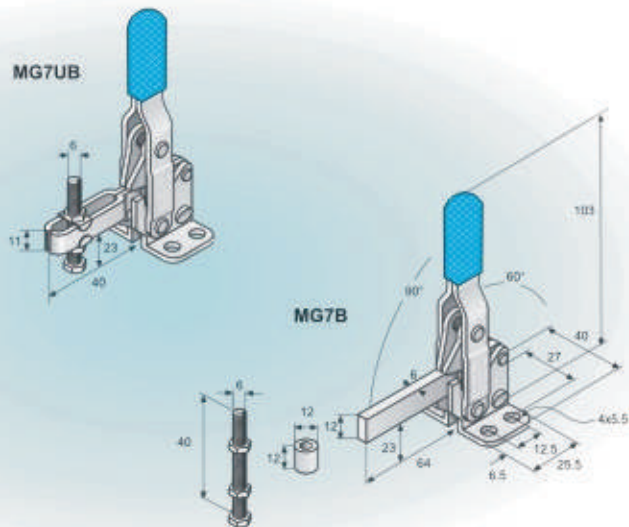
MG7



Material: Heavy gauge steel
 Hardened pins and bushes
Finishing: Zinc Plated
Supplied with: 6x40mm spindles
Max Holding pressure: 113daN close to body
Weight: 0.2Kgs
Clamping pressure:



MG7B



VERTICAL ACTION

MG3



Material: Heavy gauge steel
Hardened pins and bushes

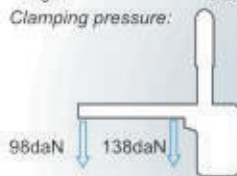
Finishing: Zinc Plated

Supplied with: 6x50mm spindles

Max Holding pressure: 230daN close to body

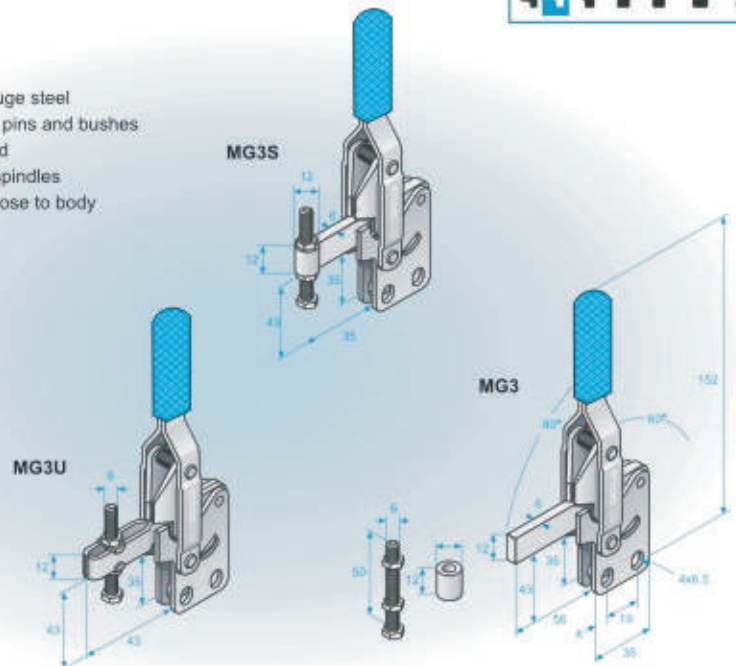
Weight: 0.25Kgs

Clamping pressure:



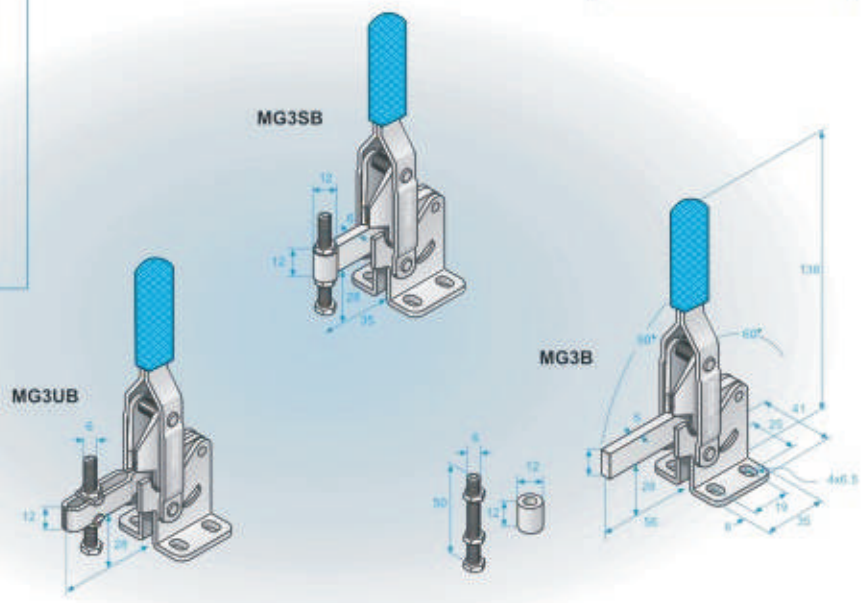
MOUNTING PLATE

See accessories page for details



MG3B

T-HANDLE
MG3-T



VERTICAL ACTION

MG84

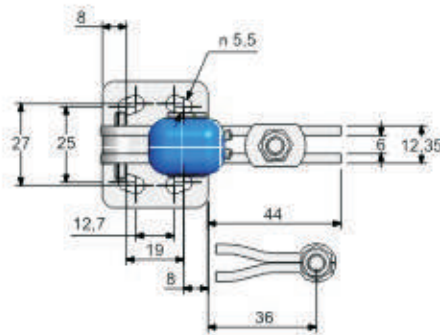
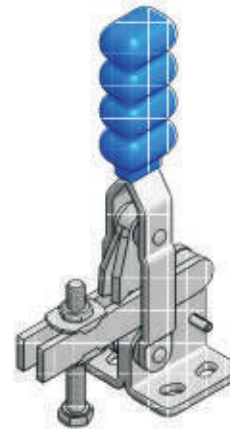


Material: Heavy gauge steel
Finish: Zinc plated
Supplied with: M6x50mm spindle
Max holding force: 230daN
Weight: 0.23Kgs
Clamping pressure:



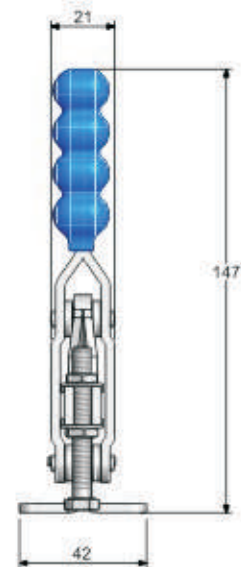
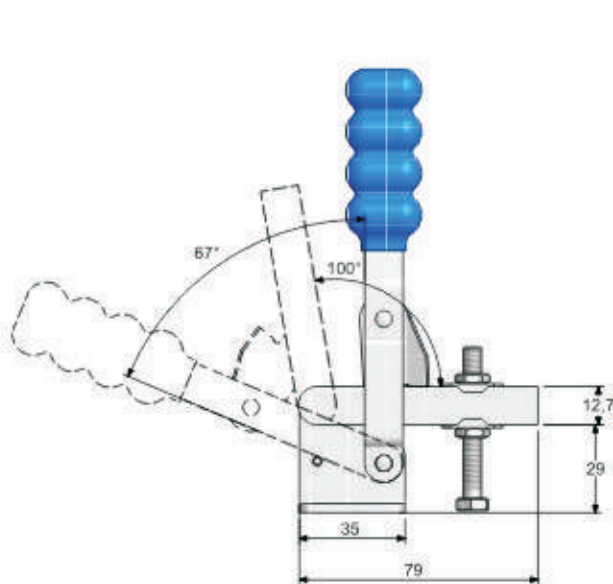
MG84SB

MG84UB



MG84UB

MG84SB

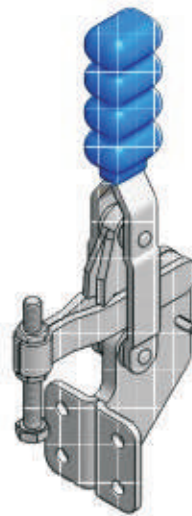


VERTICAL ACTION

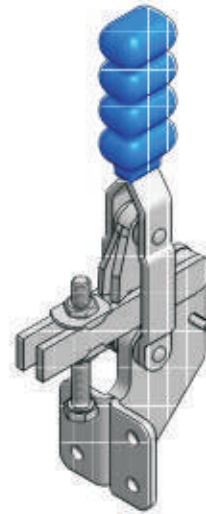
MG84



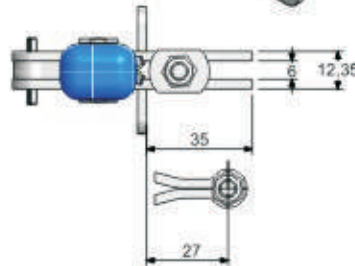
Material: Heavy gauge steel
 Finish: Zinc plated
 Supplied with: M6x50mm spindle
 Max holding force: 230daN
 Weight: 0.28Kgs
 Clamping pressure:



MG84SF

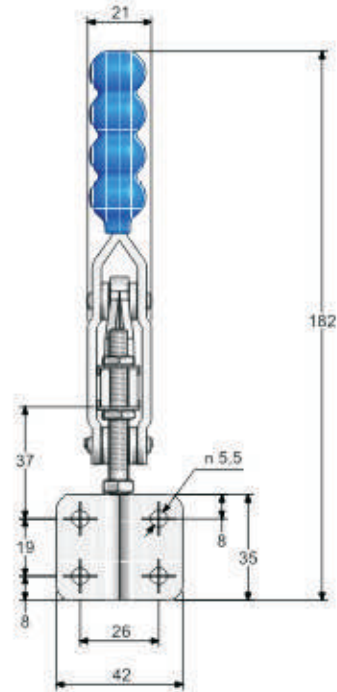
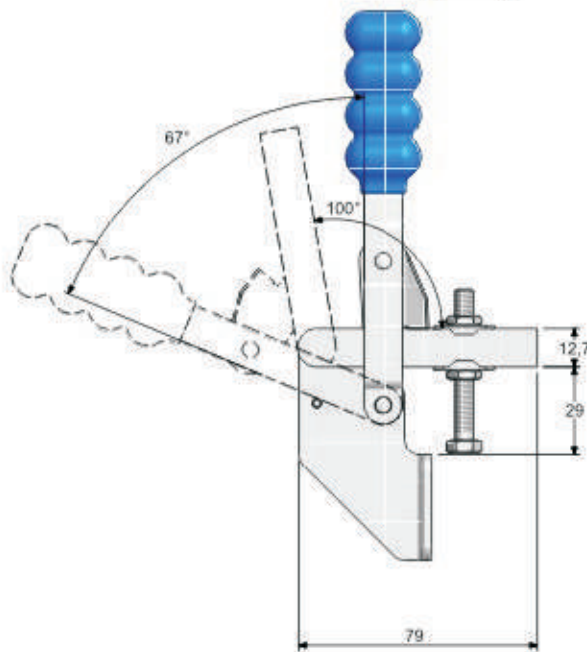


MG84UF



MG84UF

MG84SF



VERTICAL ACTION

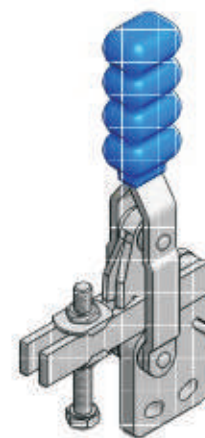
MG84



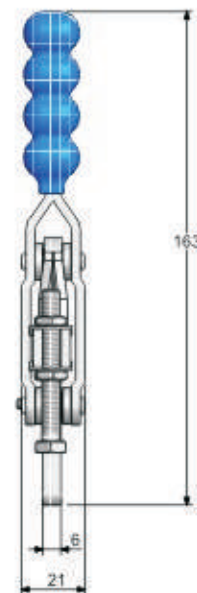
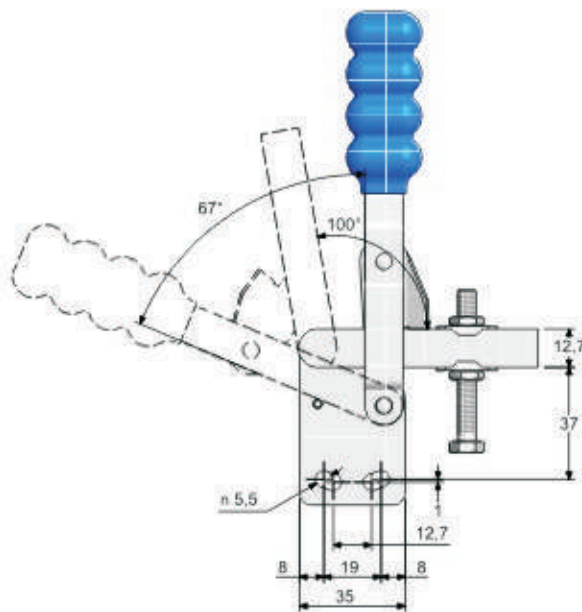
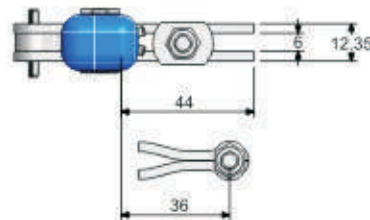
Material: Heavy gauge steel
 Finish: Zinc plated
 Supplied with: M6x50mm spindle
 Max holding force: 230daN
 Weight: 0.23Kgs
 Clamping pressure:



MG84S



MG84U



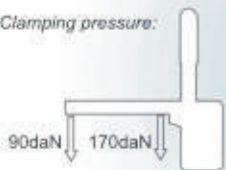
VERTICAL ACTION

MG85

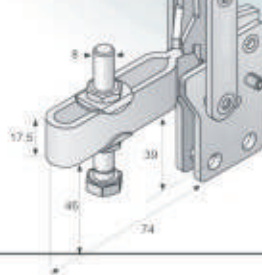


Material: Heavy gauge steel
 Hardened bushes
Finishing: Zinc Plated
Supplied with: M8x60 Spindles
Max Holding pressure: 250daN close to body
Weight: 0.38Kgs

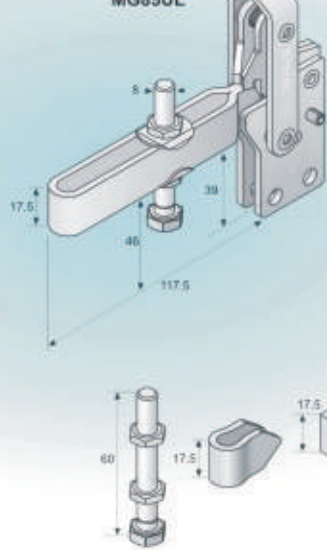
Clamping pressure:



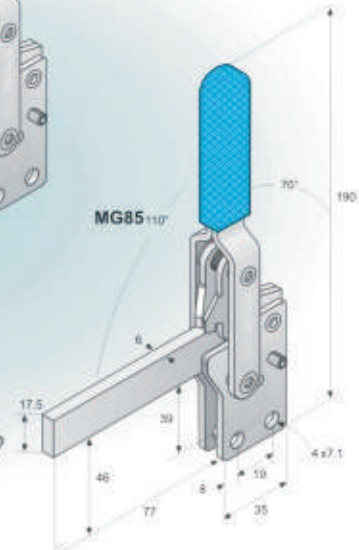
MG85U



MG85UL

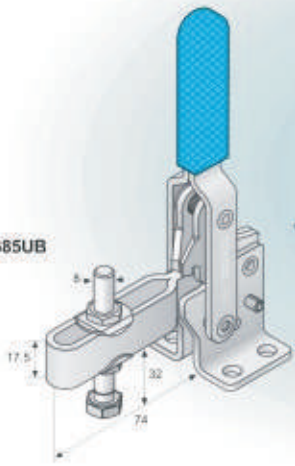


MG85^{110°}

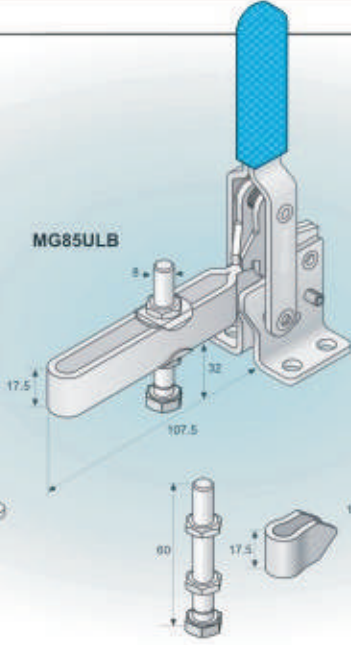


MG85B

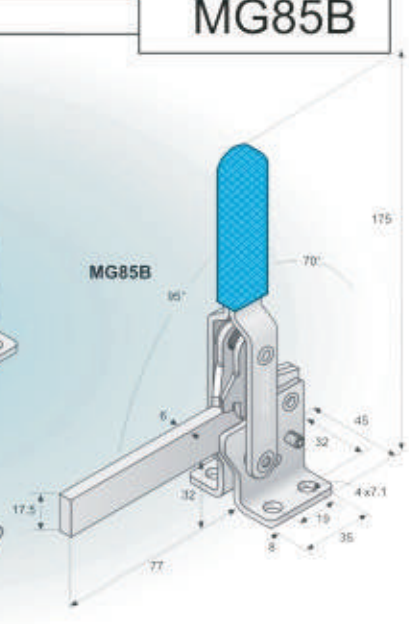
MG85UB



MG85ULB



MG85B

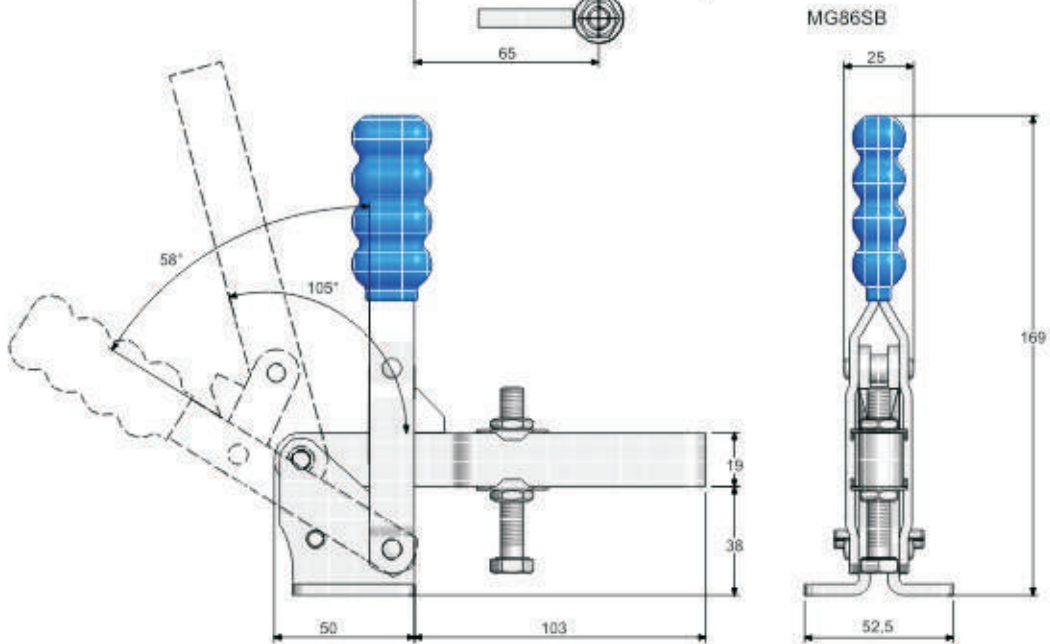
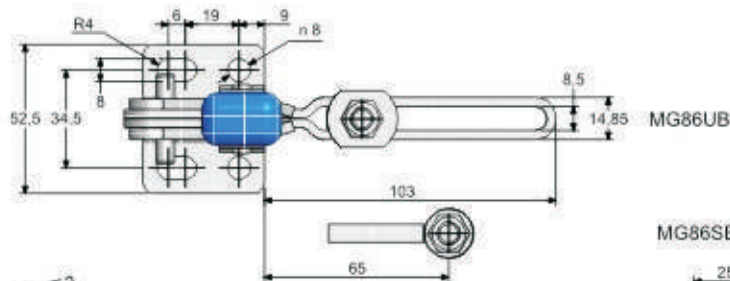
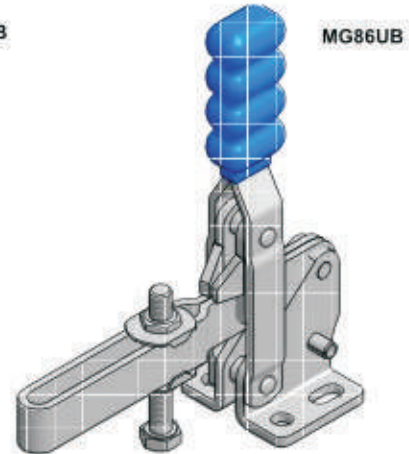
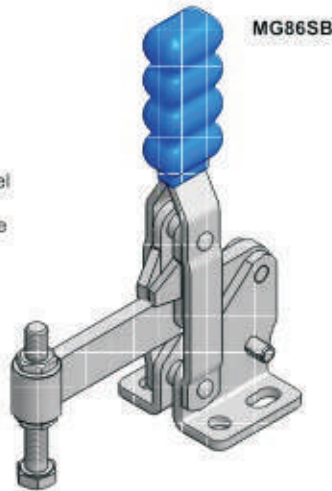


VERTICAL ACTION

MG86



Material: Heavy gauge steel
 Finish: Zinc plated
 Supplied with: M8x70mm spindle
 Max holding force: 290daN
 Weight: 0.55Kgs
 Clamping pressure:

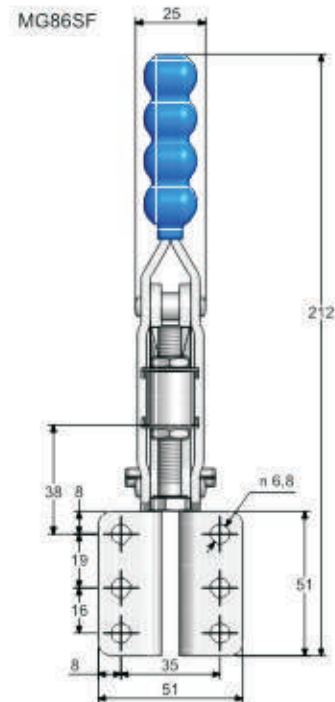
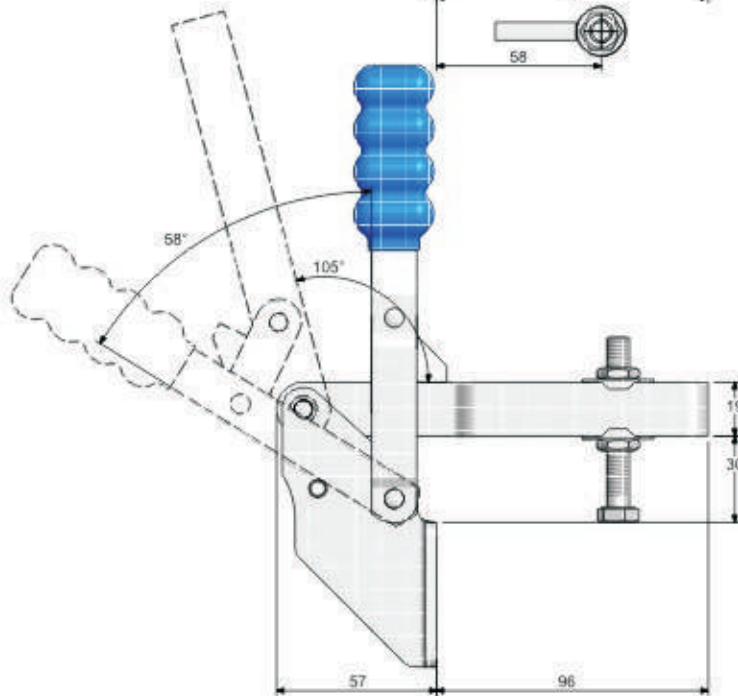
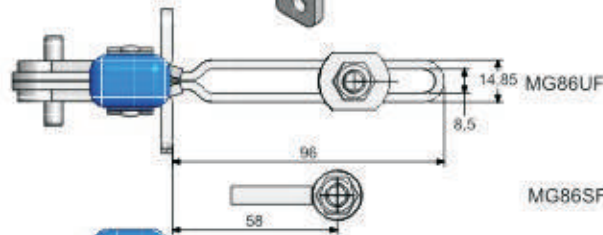
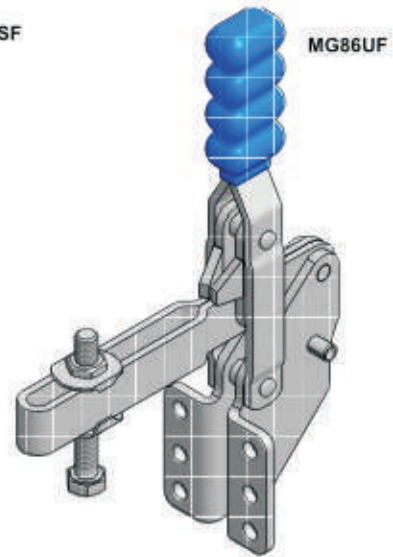
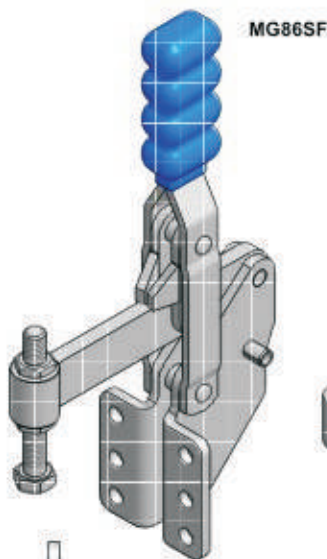
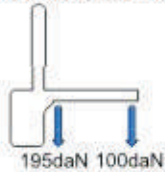


VERTICAL ACTION

MG86



Material: Heavy gauge steel
 Finish: Zinc plated
 Supplied with: M8x70mm spindle
 Max holding force: 290daN
 Weight: 0.65Kgs
 Clamping pressure:

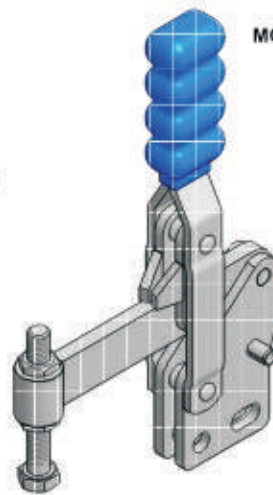
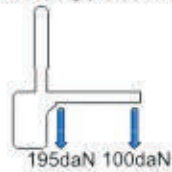


VERTICAL ACTION

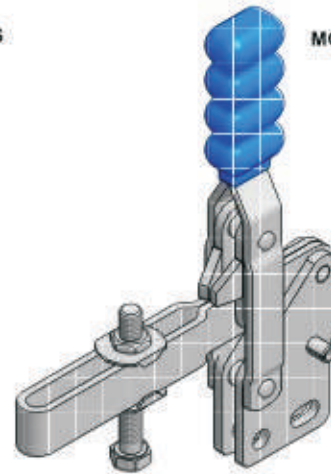
MG86



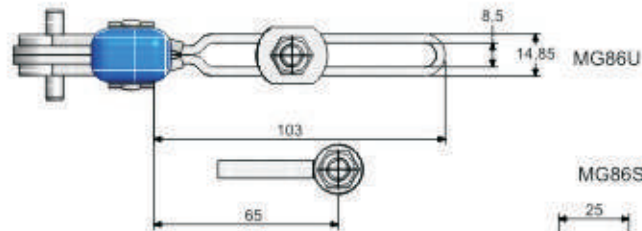
Material: Heavy gauge steel
 Finish: Zinc plated
 Supplied with: M8x70mm spindle
 Max holding force: 290daN
 Weight: 0.55Kgs
 Clamping pressure:



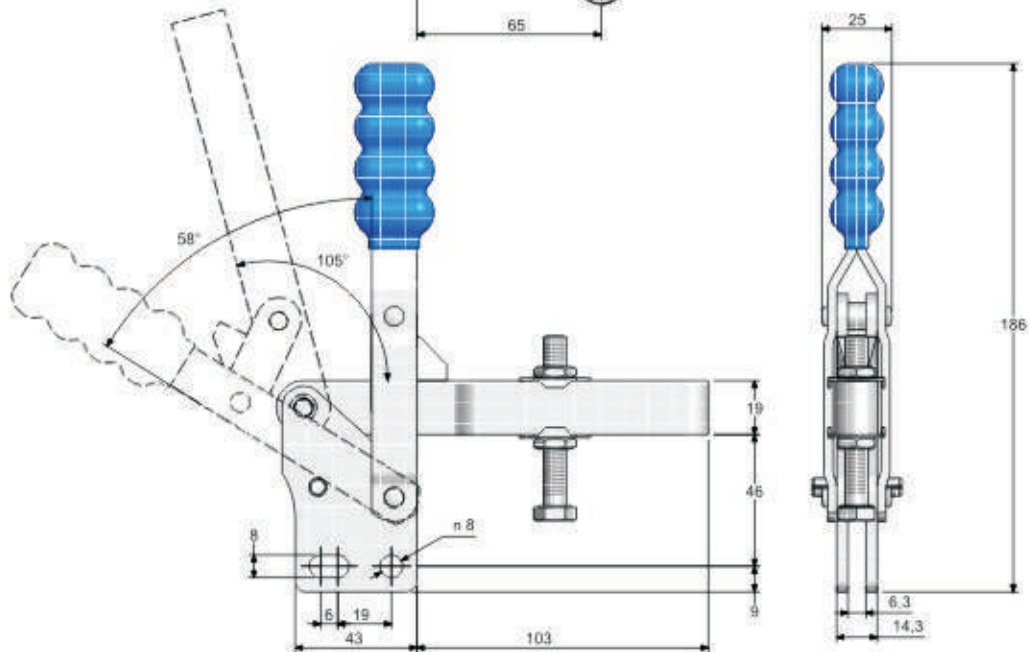
MG86S



MG86U



MG86S



VERTICAL ACTION

MG2



Material: Heavy gauge steel
Hardened pins and bushes

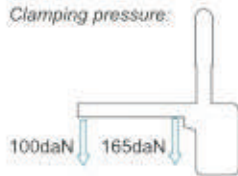
Finishing: Zinc Plated

Supplied with: Spindles as shown

Max Holding pressure: 290daN close to body

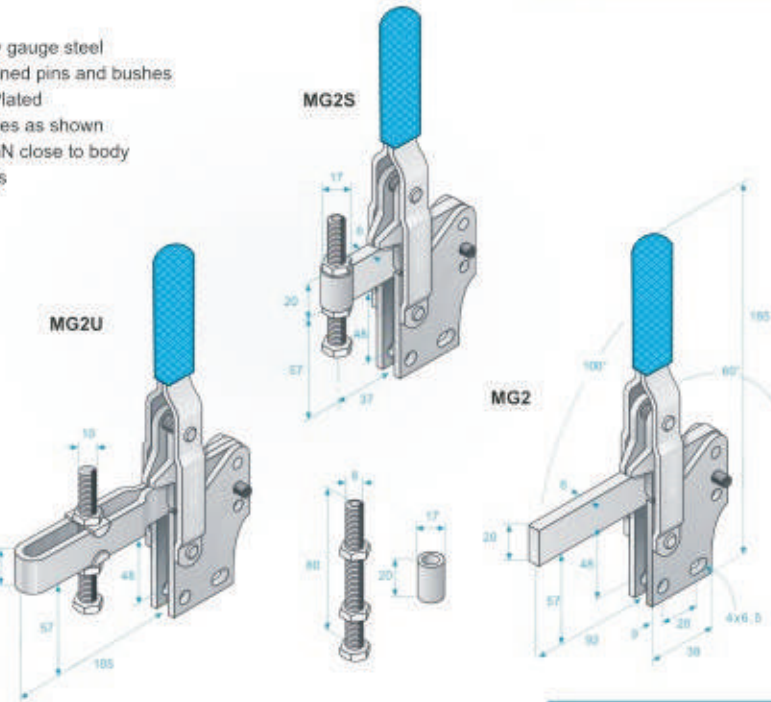
Weight: 0.5Kgs

Clamping pressure:



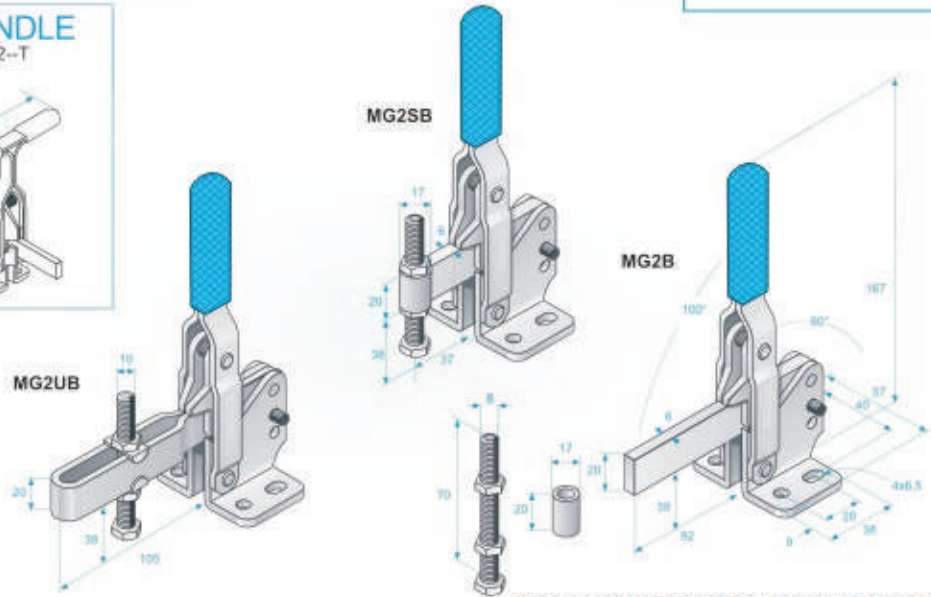
MOUNTING PLATE

See accessories page for details



MG2B

T-HANDLE
MG2--T



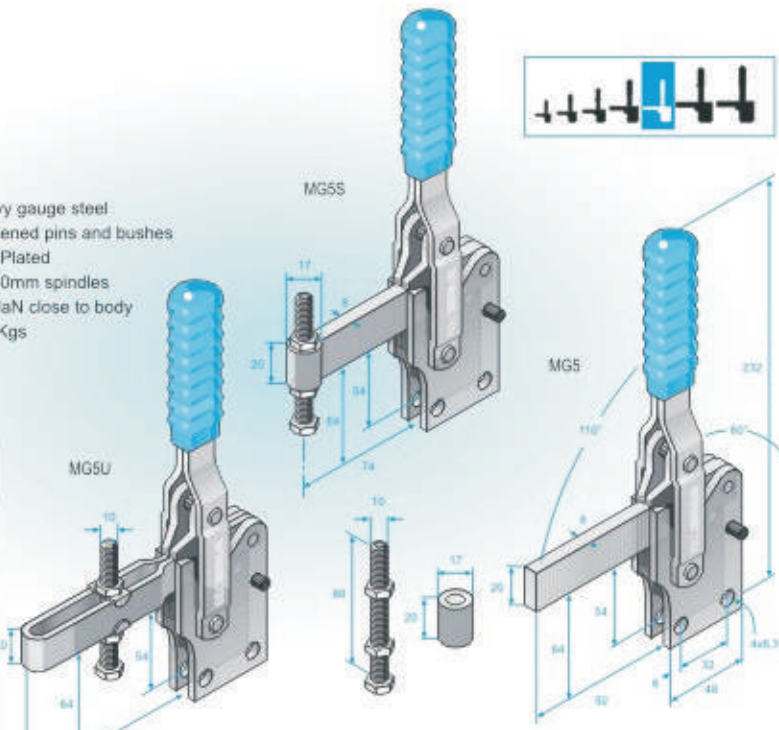
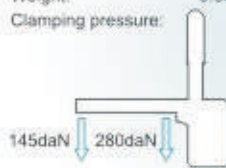
Refer to accessory pages for further information

VERTICAL ACTION

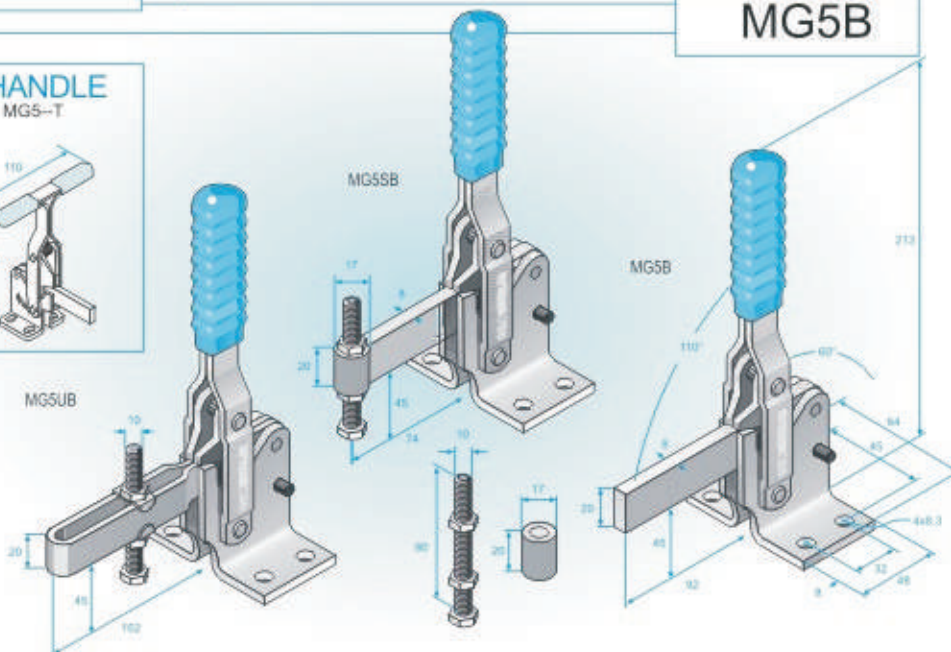
MG5



Material: Heavy gauge steel
 Hardened pins and bushes
 Finishing: Zinc Plated
 Supplied with: 10x80mm spindles
 Max Holding pressure: 360daN close to body
 Weight: 0.68Kgs
 Clamping pressure:



MG5B

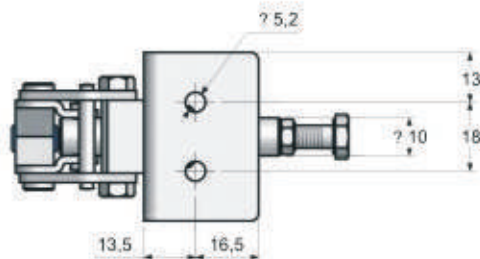
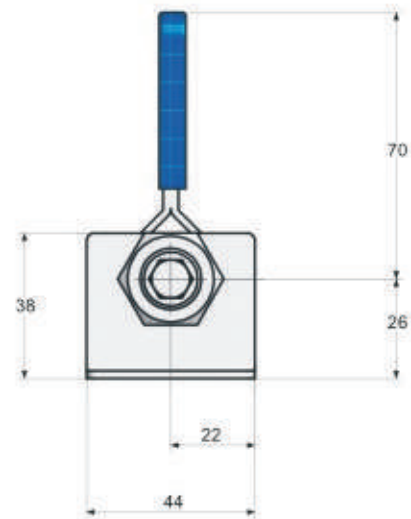
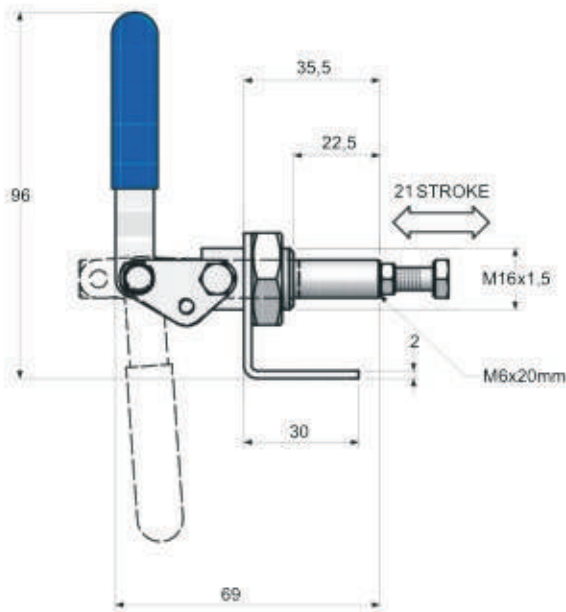
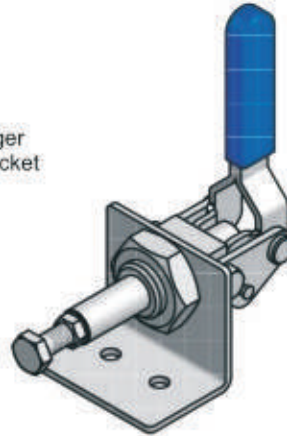


PLUNGER ACTION

CP15



Material: Heavy gauge steel
Finish: Zinc plated, Chemi blacked plunger
Supplied with: M6x35mm spindle, Mounting bracket
Max holding force: 100daN
Weight: 0.15Kgs
Stroke: 21mm
Clamping pressure:



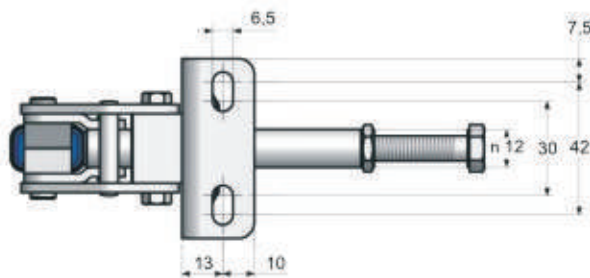
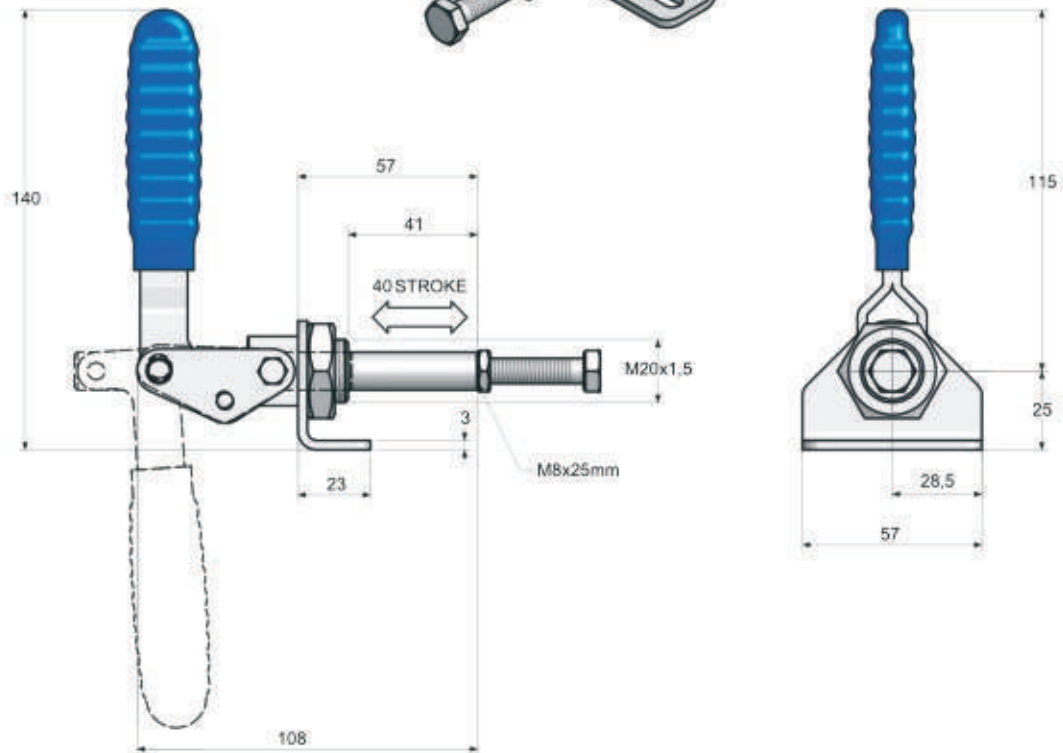
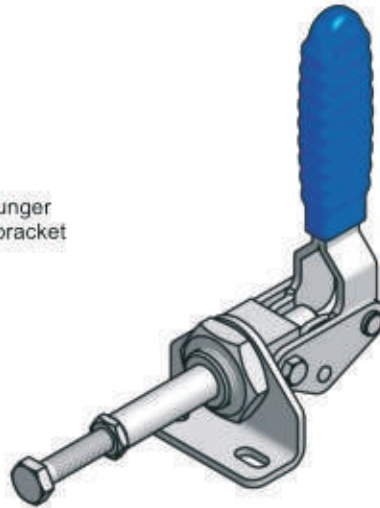
CP15SS
Stainless steel
option available

PLUNGER ACTION

CP16



Material: Heavy gauge steel
Finish: Zinc plated, Chemi blacked plunger
Supplied with: M8x60mm spindle, Mounting bracket
Max holding force: 200daN
Weight: 0.35Kgs
Stroke: 40mm
Clamping pressure:



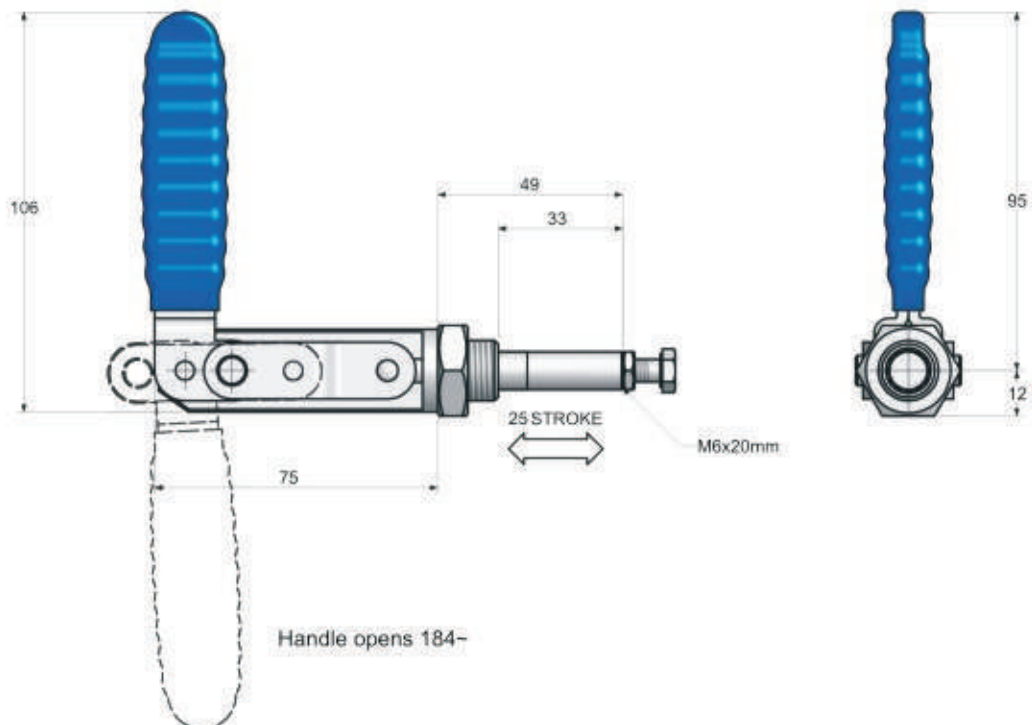
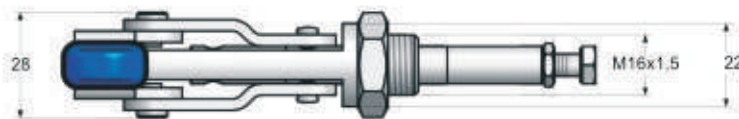
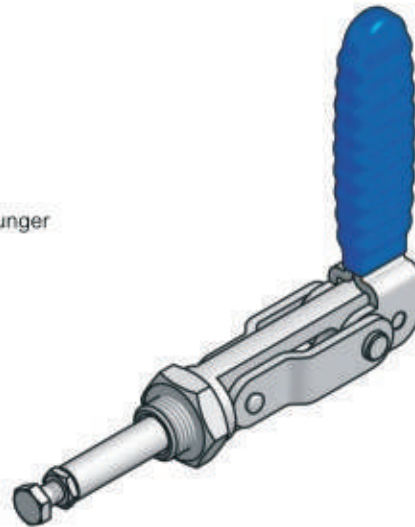
CP16SS
Stainless steel
option available

PLUNGER ACTION

CP44



Material: Heavy gauge steel
Finish: Zinc plated, Chemi blacked body and plunger
Supplied with: M6x25mm spindle
Max holding force: 350daN
Weight: 0.25Kgs
Stroke: 25mm
Clamping pressure:



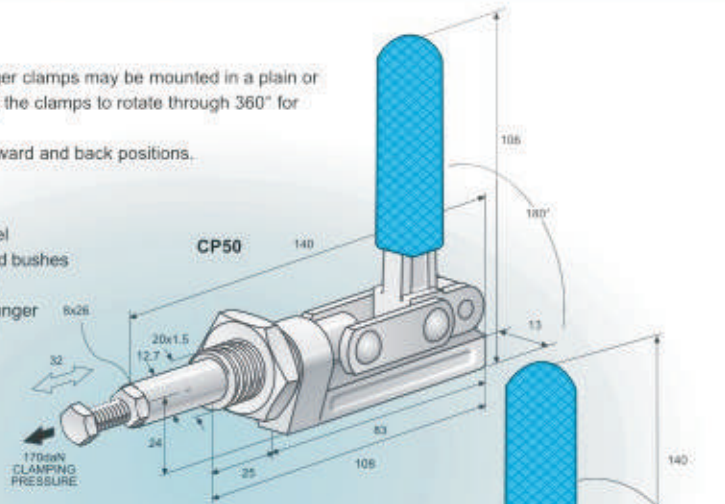
PLUNGER ACTION NOSE MOUNTED CLAMPS CP



Nose mounted plunger clamps may be mounted in a plain or tapped hole allowing the clamps to rotate through 360° for handle positioning.
Clamps toggle in forward and back positions.

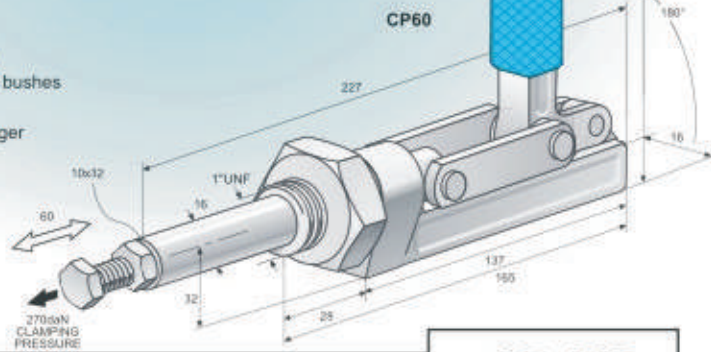
CP50

Material: Heavy gauge steel
Hardened pins and bushes
Finishing: Zinc plated body
Copper plated plunger
Supplied with: 6x26 8x40mm spindle
Max Holding pressure: 410daN
Weight: 0.43Kgs



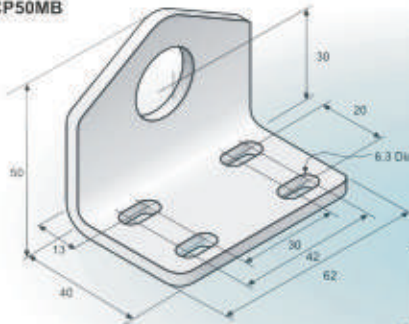
CP60

Material: Heavy gauge steel
Hardened pins and bushes
Finishing: Zinc plated body
Copper plated plunger
Supplied with: 10x60mm spindle
Max Holding pressure: 600daN
Weight: 1.5Kgs

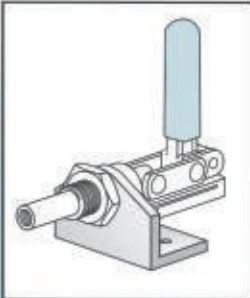
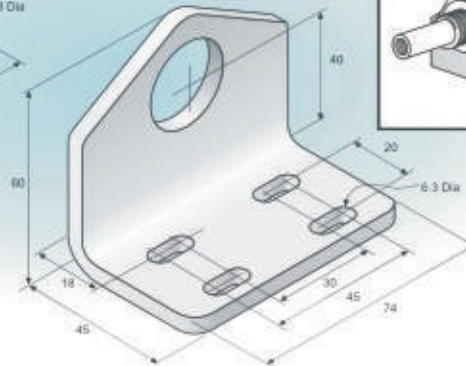


CP-MB

CP50MB



CP60MB

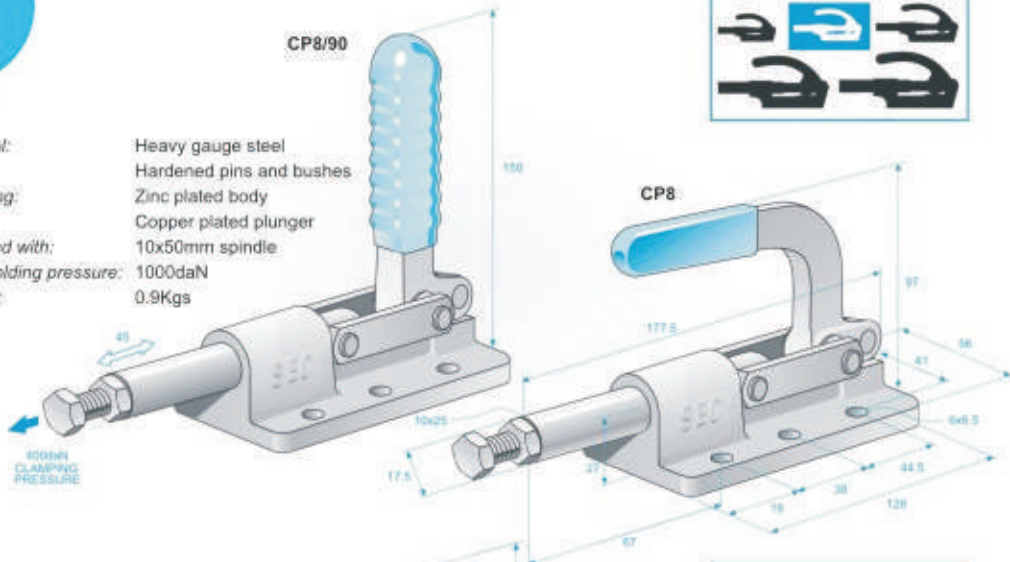


PLUNGER ACTION

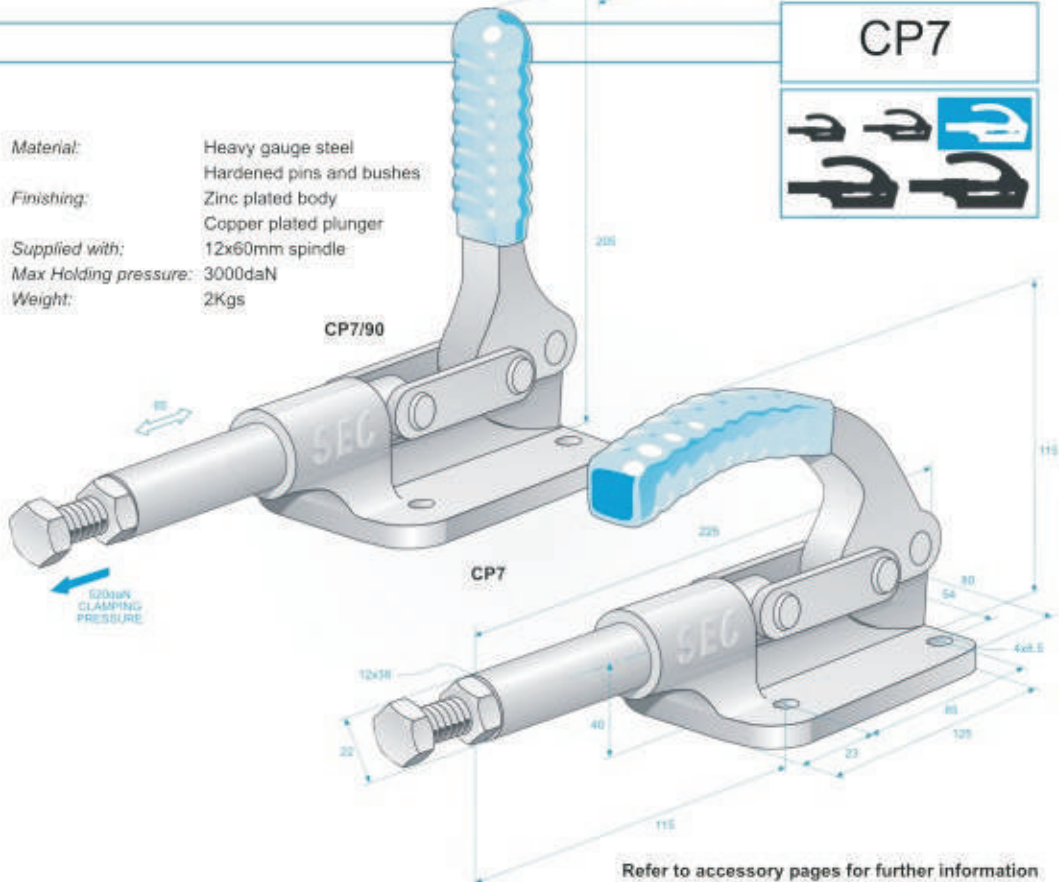
CP8



Material: Heavy gauge steel
Finishing: Hardened pins and bushes
 Zinc plated body
 Copper plated plunger
Supplied with: 10x50mm spindle
Max Holding pressure: 1000daN
Weight: 0.9Kgs



Material: Heavy gauge steel
Finishing: Hardened pins and bushes
 Zinc plated body
 Copper plated plunger
Supplied with: 12x60mm spindle
Max Holding pressure: 3000daN
Weight: 2Kgs



Refer to accessory pages for further information

PLUNGER ACTION

CP9



The plunger clamps features a straight line action and toggle in forward and reverse positions.

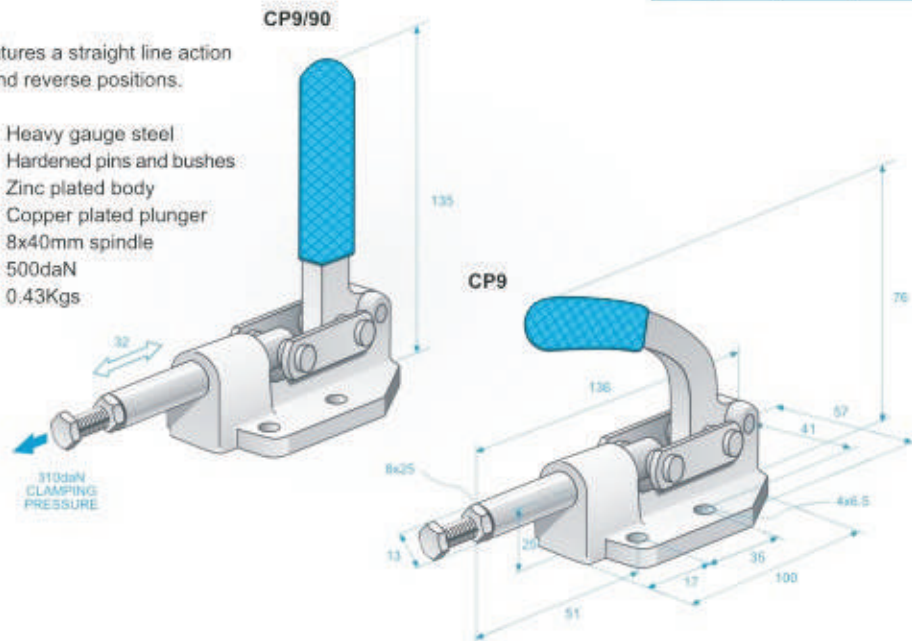
Material: Heavy gauge steel
Hardened pins and bushes

Finishing: Zinc plated body
Copper plated plunger

Supplied with: 8x40mm spindle

Max Holding pressure: 500daN

Weight: 0.43Kgs



Refer to accessory pages for further information

Plunger Action

CP Series is a range of light to heavy duty clamps with holding pressures ranging between 120 and 4500 daN. The clamps have a straight line action and toggle in both forward and reverse position.

Plunger clamps are suitable for locating shafts in vee blocks, assembly work, pushing components into position or light press operations. The plungers are copper plated to resist weld spatter.

Ball Ended

The Ball Ended Series is a range of medium to very heavy duty clamps with holding pressure ranging between 600 and 3500 daN. The Clamps feature a guided bar facility to support the clamp bar against lateral movement. The Ball Ended Series is designed for high volume heavy manufacturing assembly and welding applications, in particular the automotive industry.

Heavy Duty

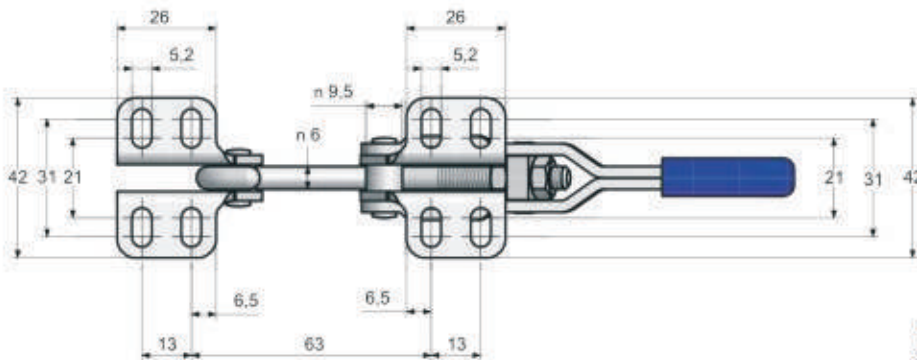
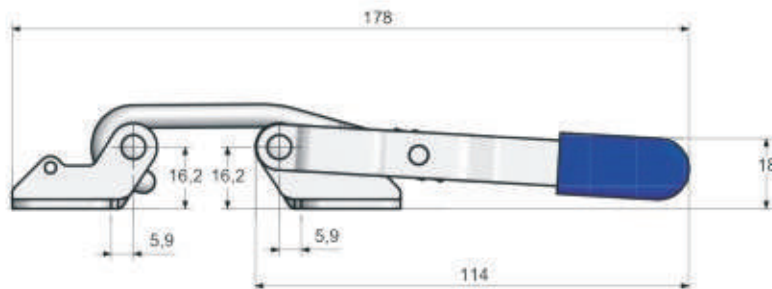
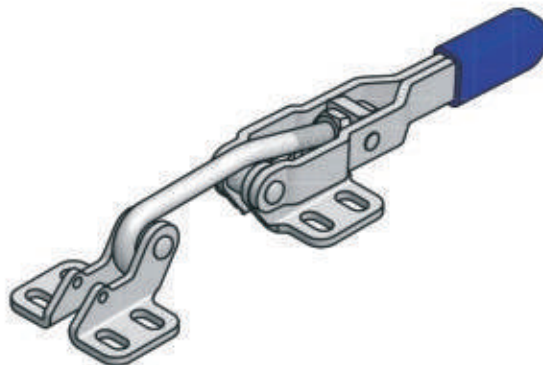
The Heavy Duty Clamps are derived from the Ball Ended Series and come as complete units with arms, bases and handles fitted. They offer the same robust construction and high strength properties as their Ball Ended counterparts.

HOOK CLAMP

HC01



Material: Heavy gauge steel
Finish: Zinc Plated
Supplied with: Hook, Latch plate
Max holding force: 190daN
Weight: 0.13Kgs
Clamping pressure:



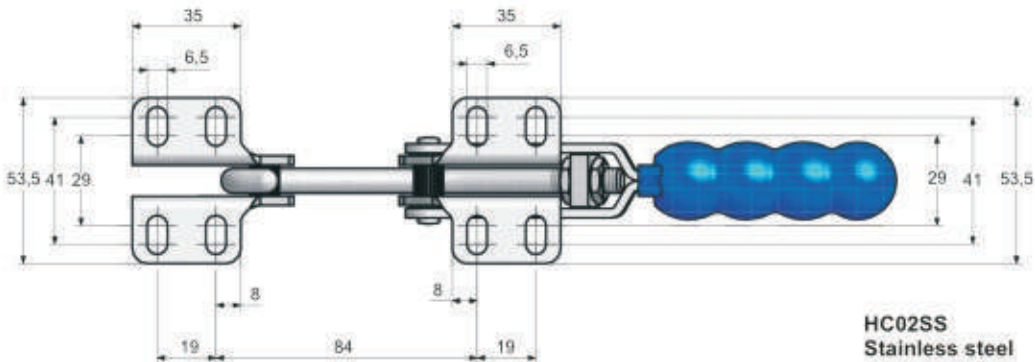
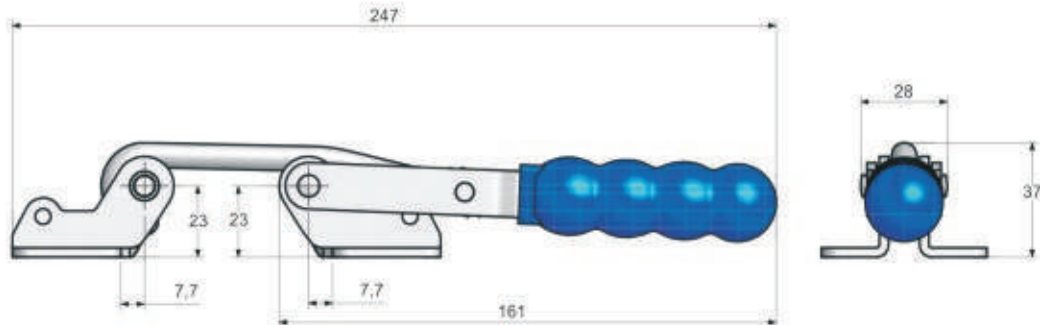
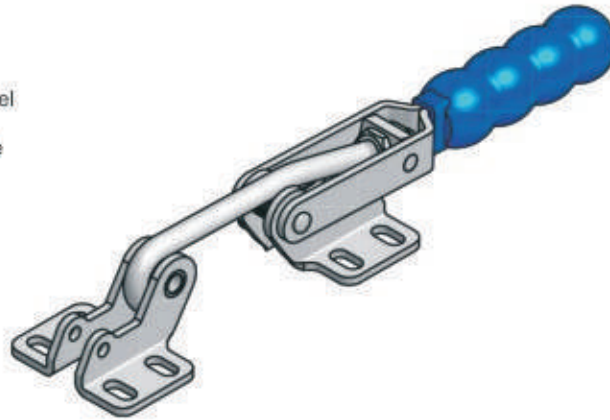
HC01SS
Stainless steel
option available

HOOK CLAMP

HC02



Material: Heavy gauge steel
Finish: Zinc Plated
Supplied with: Hook, Latch plate
Max holding force: 395daN
Weight: 0.3Kgs
Clamping pressure:



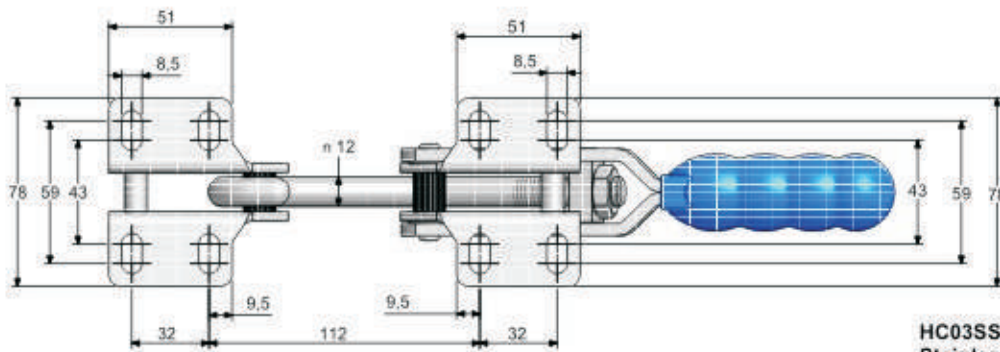
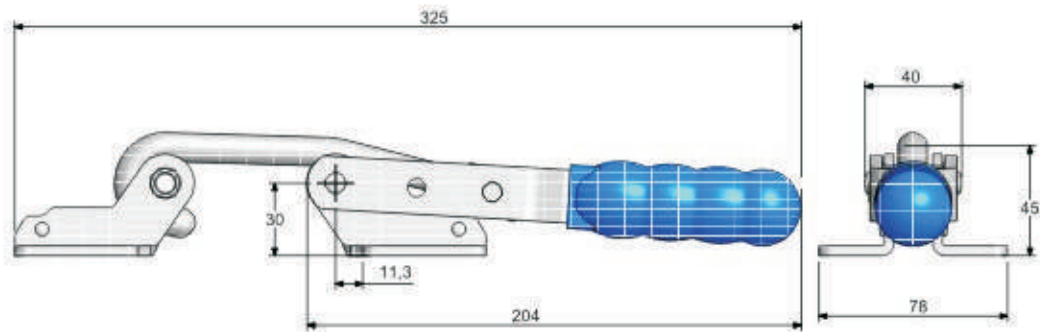
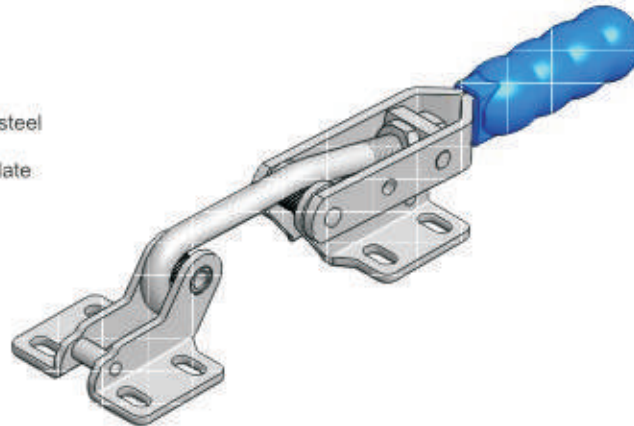
HC02SS
Stainless steel
option available

HOOK CLAMP

HC03



Material: Heavy gauge steel
Finish: Zinc Plated
Supplied with: Hook, Latch plate
Max holding force: 680daN
Weight: 0.85Kgs
Clamping pressure:



HC03SS
Stainless steel
option available

HOOK CLAMP

HC22

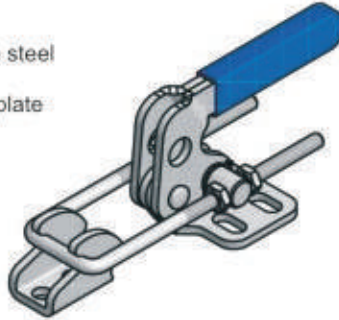


Material:
Finish:
Supplied with:
Max holding force:
Weight:
Clamping pressure:

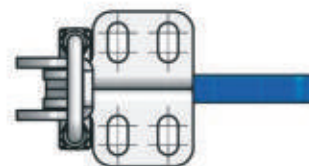
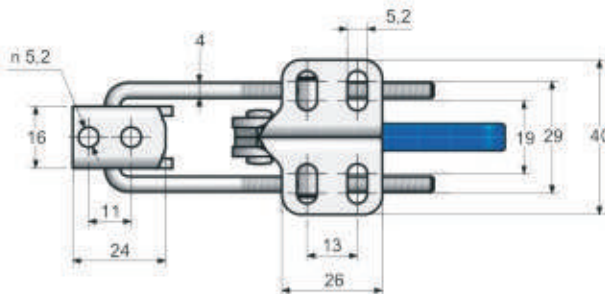
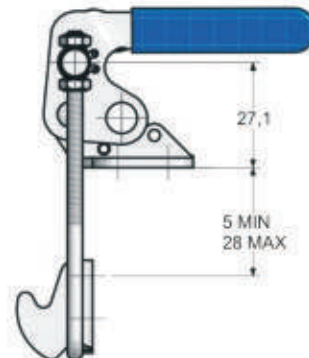
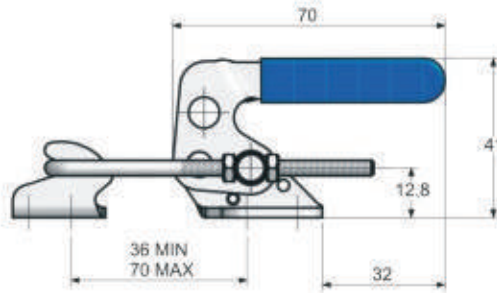
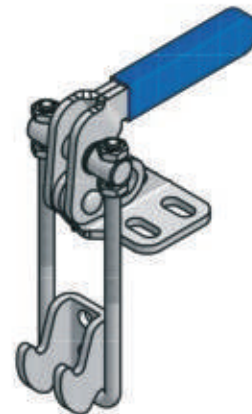
Heavy gauge steel
Zinc Plated
Hook, Latch plate
210daN
0.13Kgs



HC22H



HC22V



HC22HSS & HC22VSS
Stainless steel
option available

Different hook lengths available if required

HOOK CLAMP

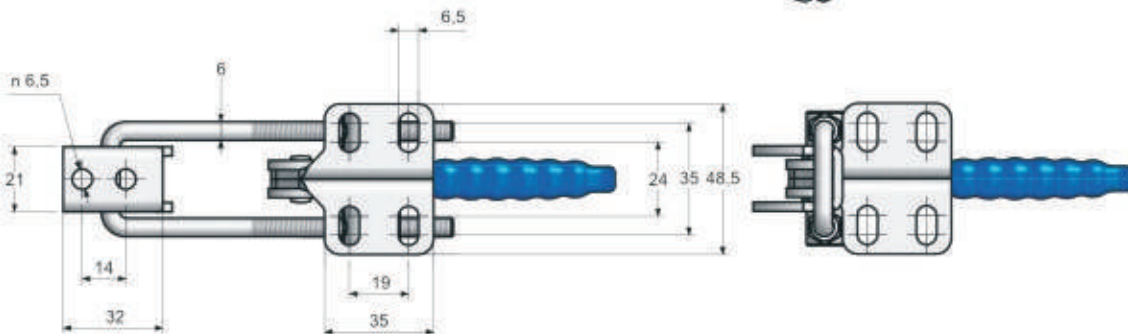
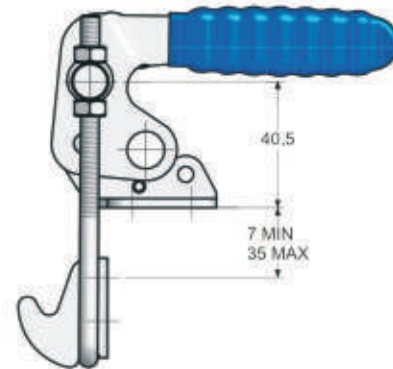
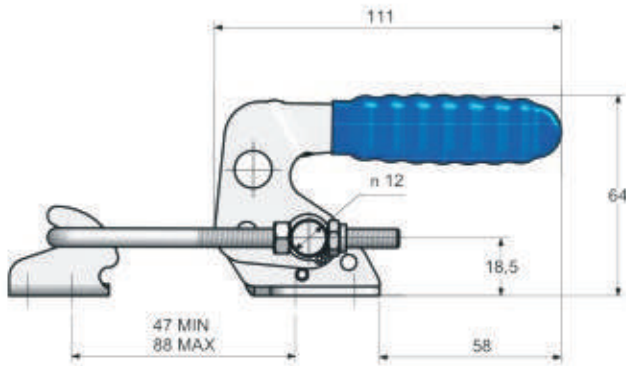
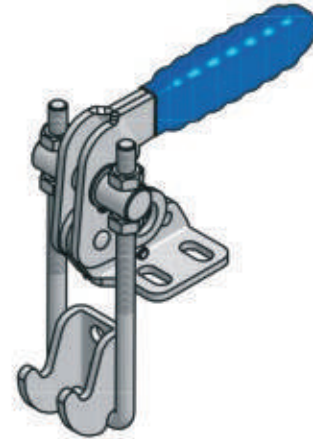
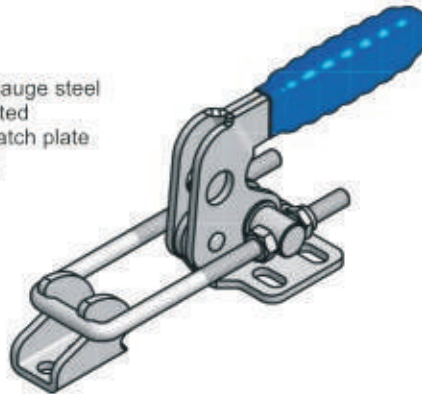
HC24



Material: Heavy gauge steel
 Finish: Zinc Plated
 Supplied with: Hook, Latch plate
 Max holding force: 410daN
 Weight: 0.3Kgs
 Clamping pressure:

HC24H

HC24V



HC24HSS & HC24VSS
 Stainless steel
 option available

Different hook lengths available if required

HOOK CLAMP

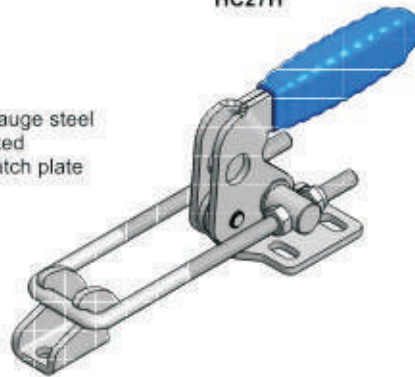
HC27



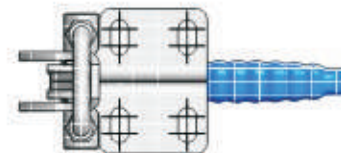
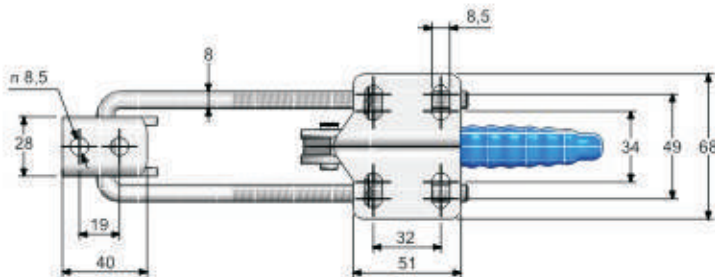
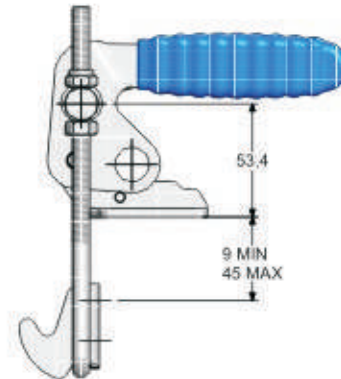
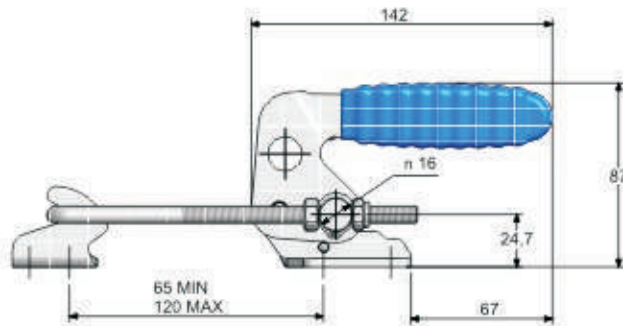
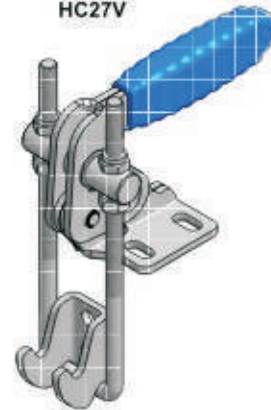
Material: Heavy gauge steel
 Finish: Zinc Plated
 Supplied with: Hook, Latch plate
 Max holding force: 710daN
 Weight: 0.72Kgs
 Clamping pressure:



HC27H



HC27V



HC27HSS & HC27VSS
 Stainless steel
 option available

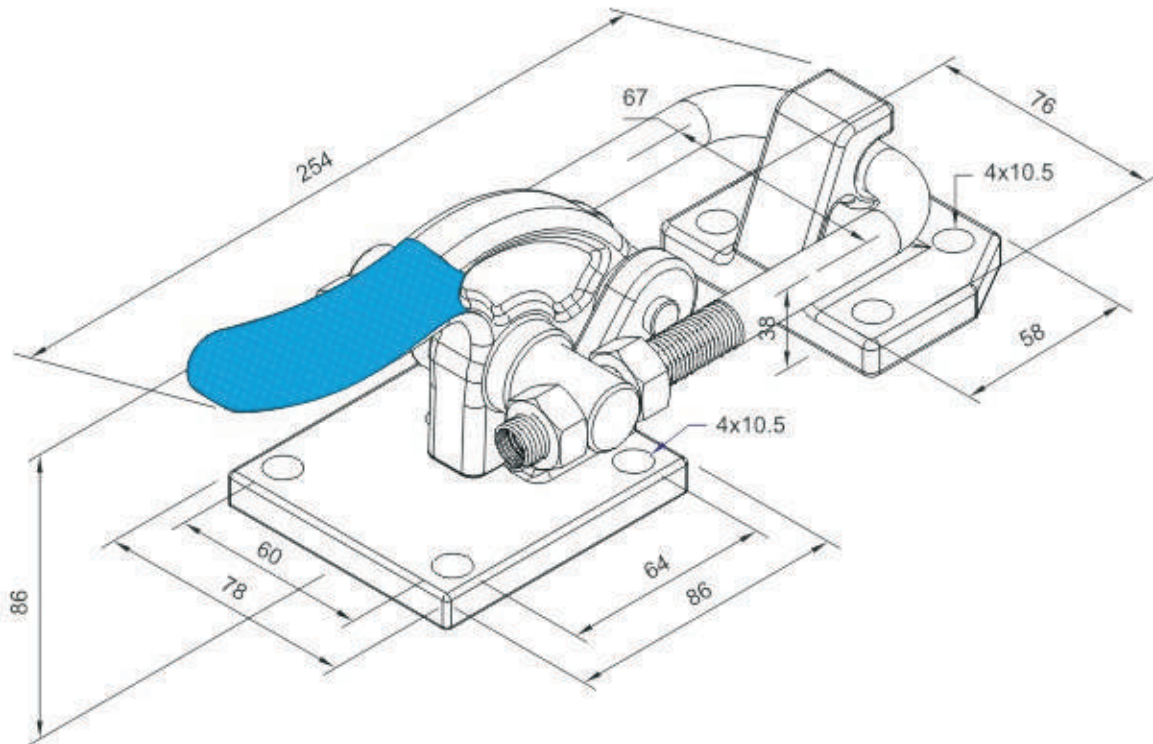
Different hook lengths available if required

HOOK CLAMP

HC19



Material : Heavy gauge steel
Hardened pins and bushes
Finishing : Zinc Plated
Max Holding pressure : 3730daN
Weight : 1.85Kgs



VERTICAL ACTION

Ball Ended Series



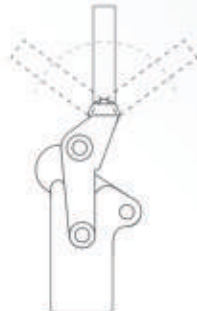
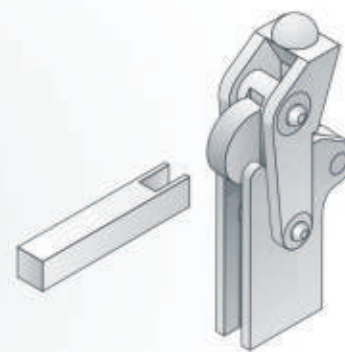
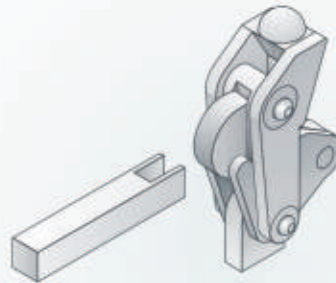
The **Ball Ended Series** are a range of heavy duty clamps specifically designed for high production and heavy manufacturing operations. Two models are available - the straight sided CH Series for template mounting and the SCH Series for variable base mounting.

Handles, grips, bases and arms are available. Where the complete clamp unit is required please refer to the **Vertical Action Heavy Duty clamps**.

SCH Series
M18SCH
M19SCH
M20SCH
M30SCH
M40SCH



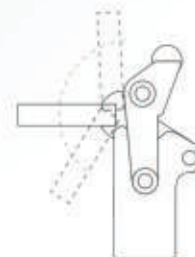
CH Series
M18CH
M19CH
M20CH
M30CH
M40CH



The handle can be positioned to suit application

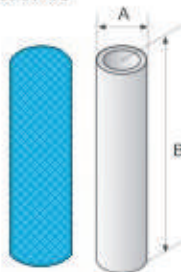


The base can be positioned to suit application



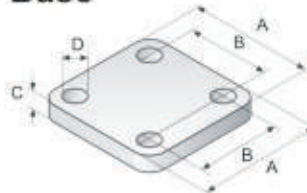
The bar can be positioned to suit application

Handles Grips



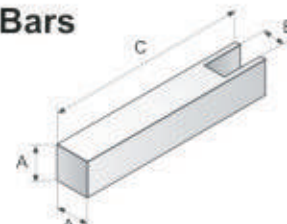
Handle No.	A	B	
M18H	22	75	M18CH, M18SCH
M19H	22	90	M19CH, M19SCH
M20H	22	100	M20CH, M20SCH
M30H	26	150	M30CH, M30SCH
M40H	26	175	M40CH, M40SCH

Base



Base No.	A	B	C	D
M18B	45	32	6	6.5
M19B	50	35	6	6.5
M20B	65	45	8	8.5
M30B	70	51	10	8.5
M40B	90	70	12	10.0

Clamp Bars



Bar No.	A	B	C	
M18CB	20	8	100	M18CH, M18SCH
M19CB		10		M19CH, M19SCH
M20CB		12		M20CH, M20SCH
M30CB		16	125	M30CH, M30SCH
M40CB	25	19		M40CH, M40SCH

Refer to accessory pages for details on handle retaining clips

VERTICAL ACTION

BALL ENDED
SERIES

M-S/CH



M18S/CH

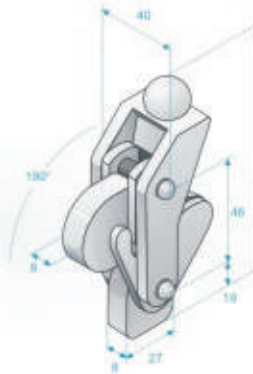
Material: Heavy gauge steel
Hardened pins and bushes

Max Holding pressure: 600daN

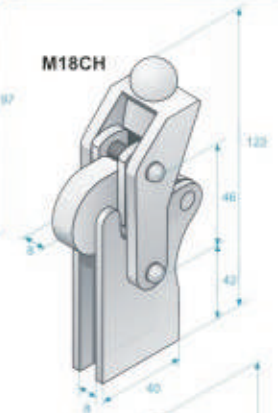
Weight: 0.5Kgs

Clamping pressure: 140daN close to body

M18SCH



M18CH



M19S/CH

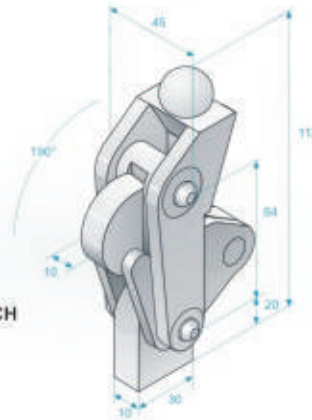
Material: Heavy gauge steel
Hardened pins and bushes

Max Holding pressure: 800daN

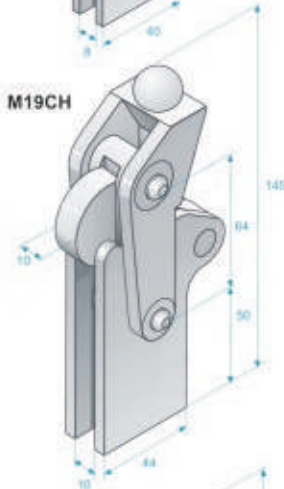
Weight: 0.75Kgs

Clamping pressure: 190daN close to body

M19SCH



M19CH



M20S/CH

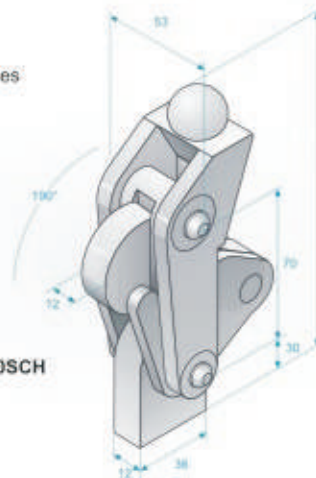
Material: Heavy gauge steel
Hardened pins and bushes

Max Holding pressure: 1300daN

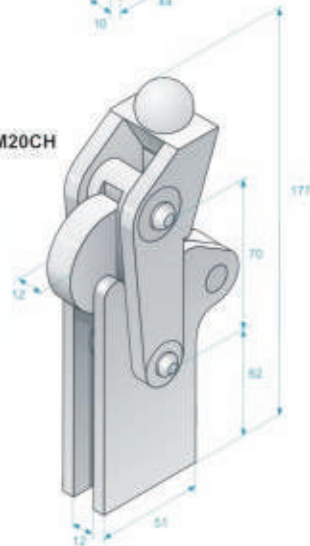
Weight: 1.5Kgs

Clamping pressure: 280daN close to body

M20SCH



M20CH



Refer to accessory pages for details on handle retaining clips

VERTICAL ACTION

BALL ENDED
SERIES

M30S/CH



M30S/CH

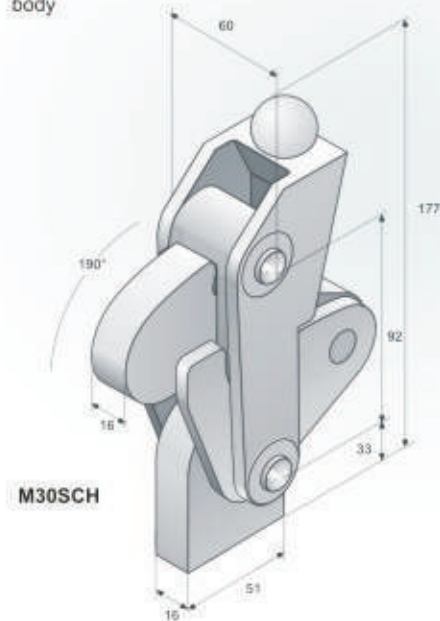
Material:

Heavy gauge steel
Hardened pins
and bushes

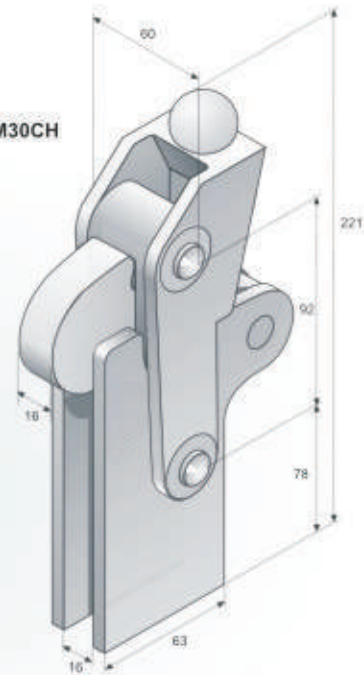
Max Holding pressure: 2500daN

Weight: 2.3Kgs

Clamping pressure: 380daN close to
body



M30CH



Horizontal Action

MH Series is a range of light to heavy duty clamps with holding pressures ranging between 60 and 680 daN.

The horizontal handle gives the clamp a low profile and is ideal in areas of restricted headroom and has the added safety feature of the handle being at the furthest point from the operation.

Hook Action

The HC Series of Clamps is range of medium to heavy duty clamps with holding pressures ranging between 200 and 8000 daN. Hook clamps have a large number of applications where quick, precise locating and retention of doors or lids is required and are particularly suited to the plastic and moulding industry.

VERTICAL ACTION

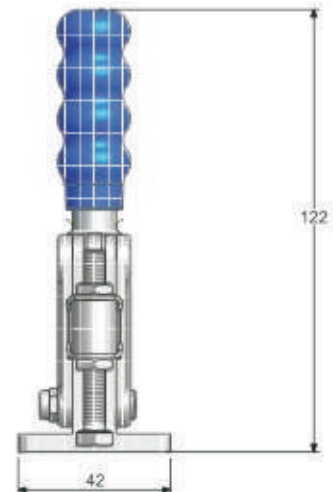
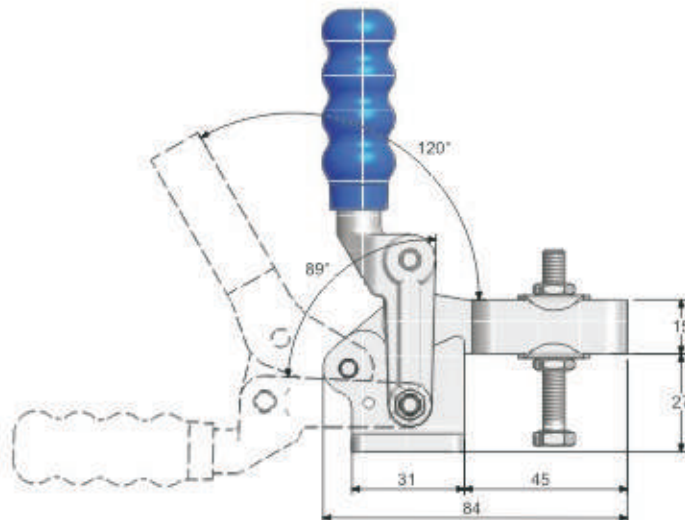
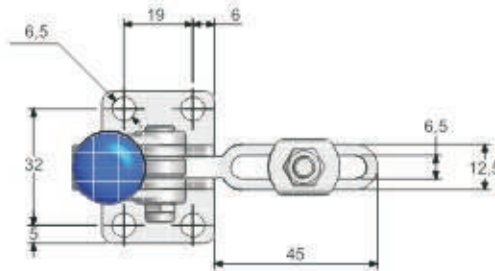
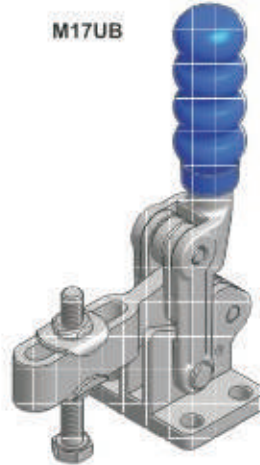
M17



Material: Heavy gauge steel
Finish: Chemi black
Supplied with: M6x50mm spindle
Max holding force: 320daN
Weight: 0.28Kgs
Clamping pressure:



M17UB



Bar opening angle can be restricted to 35° with stop pin

VERTICAL ACTION

HEAVY
DUTY

M18/T



Material: Heavy gauge steel
Hardened pins and bushes

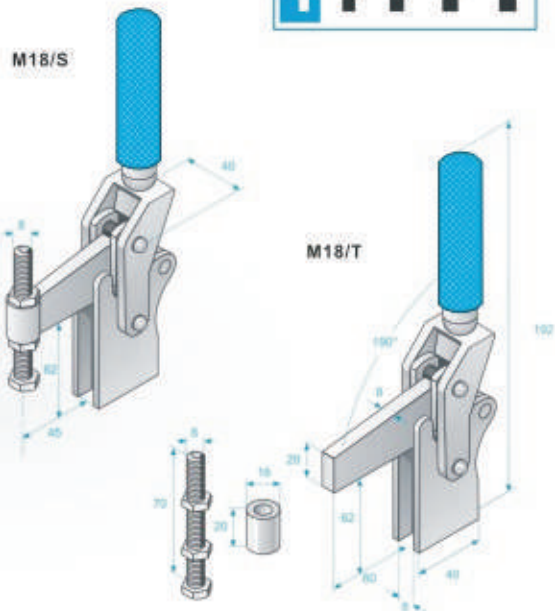
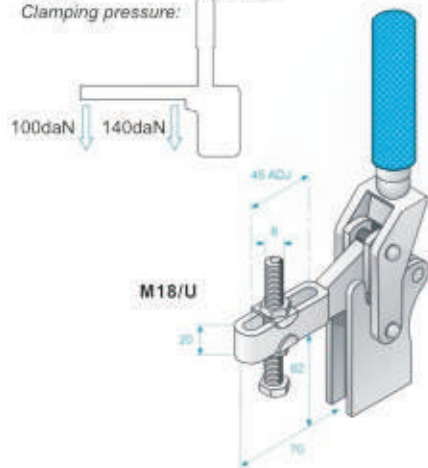
Finishing: Chemi-Blackened

Supplied with: 8x70mm spindles

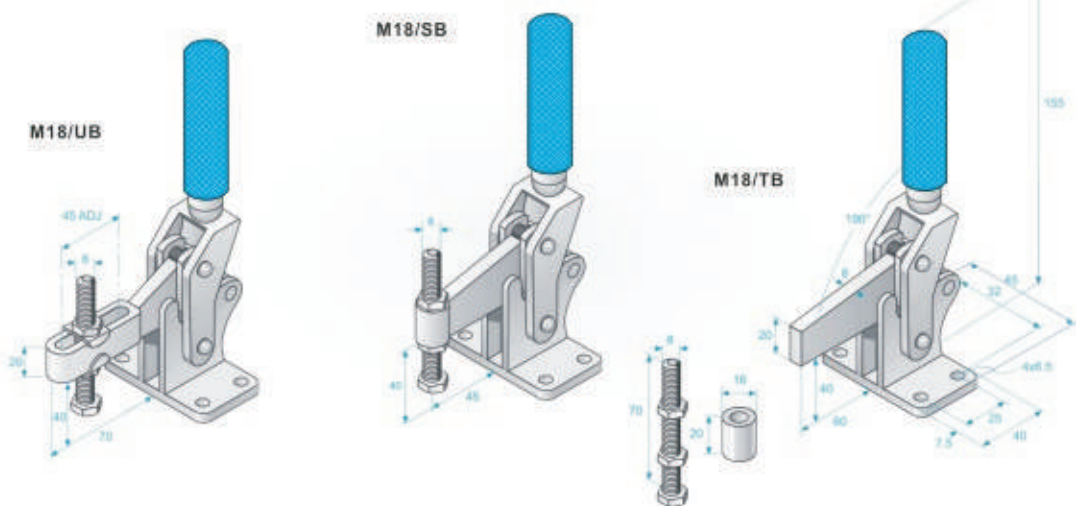
Max Holding pressure: 600daN close to body

Weight: 1.0Kgs

Clamping pressure:



M18/TB



Refer to accessory pages for further information

VERTICAL ACTION

HEAVY
DUTY

M19/T



Material: Heavy gauge steel
Hardened pins and bushes

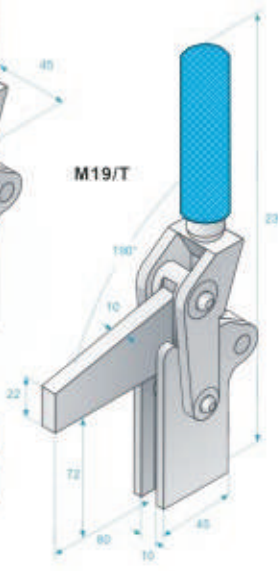
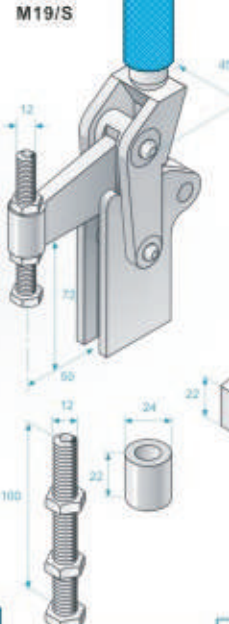
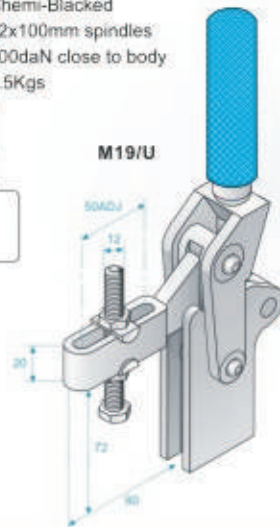
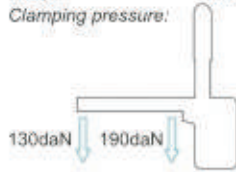
Finishing: Chemi-Blackened

Supplied with: 12x100mm spindles

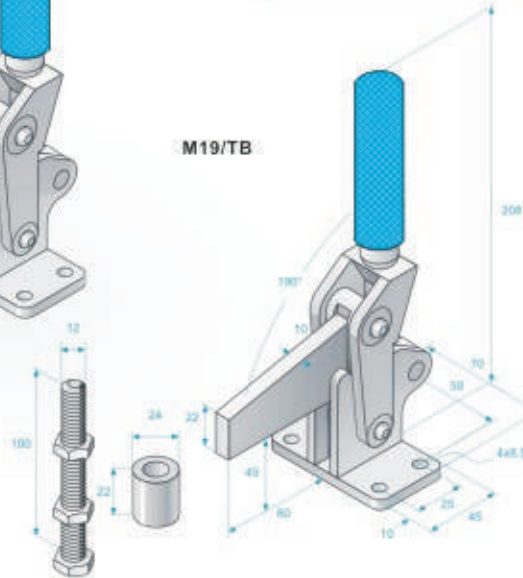
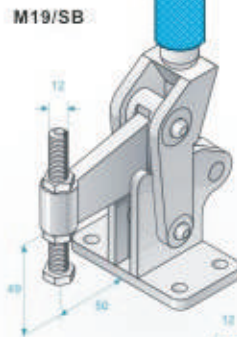
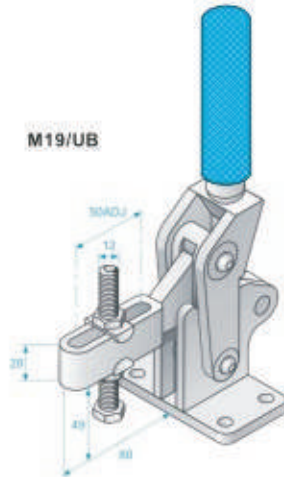
Max Holding pressure: 800daN close to body

Weight: 1.5Kgs

Clamping pressure:



M19/TB



Refer to accessory pages for further information

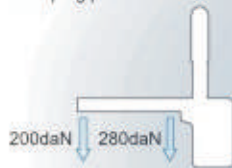
VERTICAL ACTION

HEAVY
DUTY

M20/T



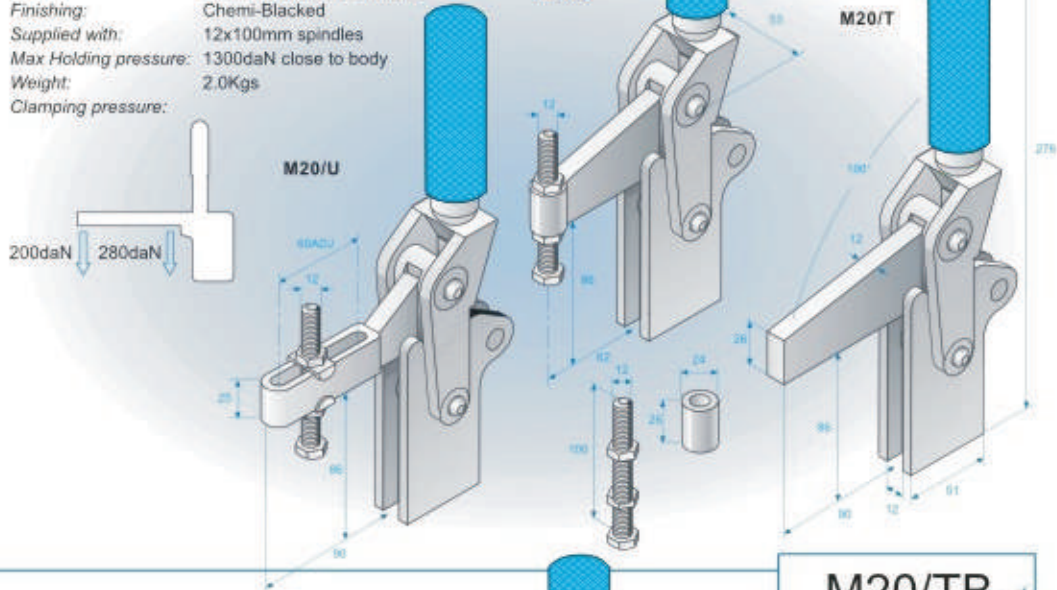
Material: Heavy gauge steel
Hardened pins and bushes
Finishing: Chemi-Blackened
Supplied with: 12x100mm spindles
Max Holding pressure: 1300daN close to body
Weight: 2.0Kgs
Clamping pressure:



M20/U

M20/S

M20/T

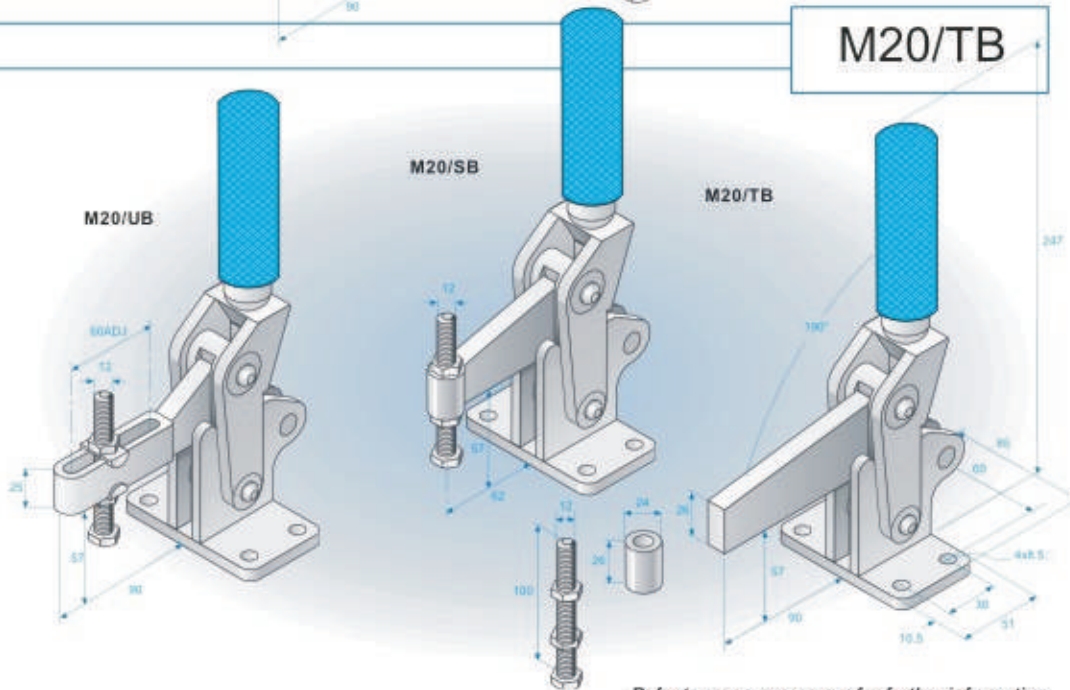


M20/TB

M20/UB

M20/SB

M20/TB



Refer to accessory pages for further information

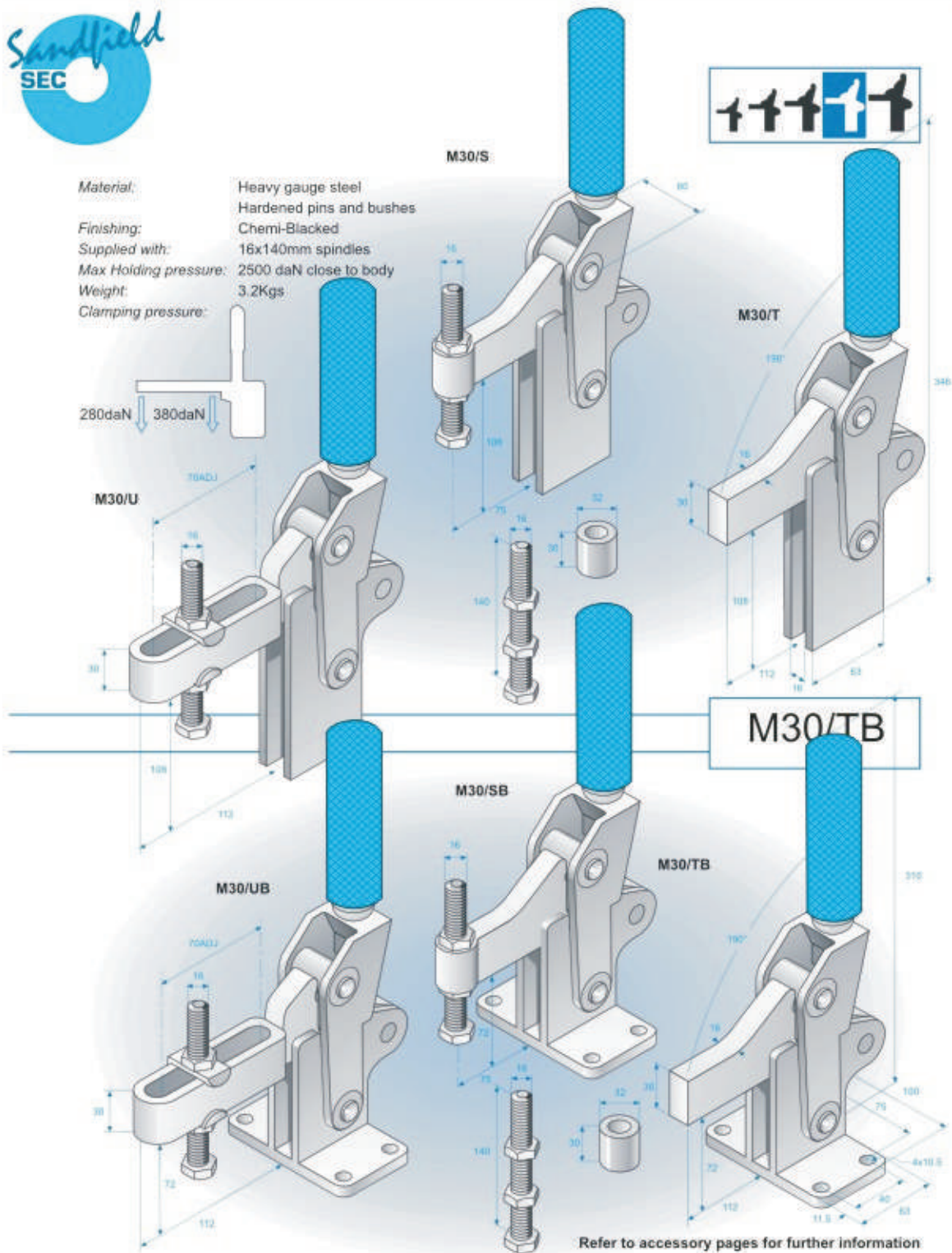
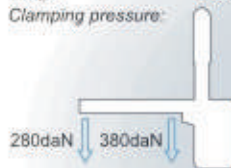
VERTICAL ACTION

HEAVY
DUTY

M30/T



Material: Heavy gauge steel
Hardened pins and bushes
Finishing: Chemi-Blackened
Supplied with: 16x140mm spindles
Max Holding pressure: 2500 daN close to body
Weight: 3.2Kgs
Clamping pressure:



HAND CLAMP

M30-01/03



M30 heavy duty hand clamp supplied with predrilled clamp arm and base.

Material: Heavy gauge steel
Hardened pins and bushes

Finishing: Chemi-Blackened

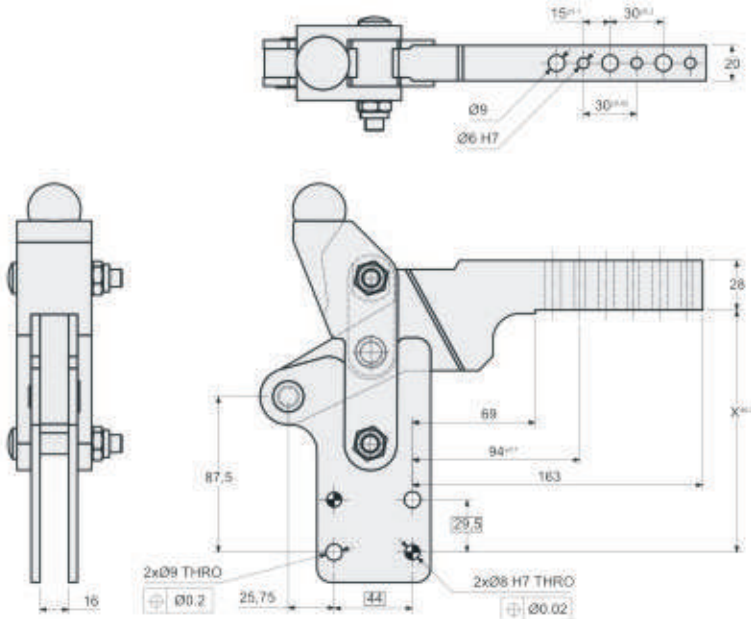
Holding pressure: 1300daN close to body

Weight: 2.9Kgs

Clamping pressure: 380daN close to body

Arm Positions: X=136 & 181

To Order: X=136: **M30-01-136**
X=181: **M30-03-181**



M20-01/03

M20 heavy duty hand clamp supplied with predrilled clamp arm and base.

Material: Heavy gauge steel
Hardened pins and bushes

Finishing: Chemi-Blackened

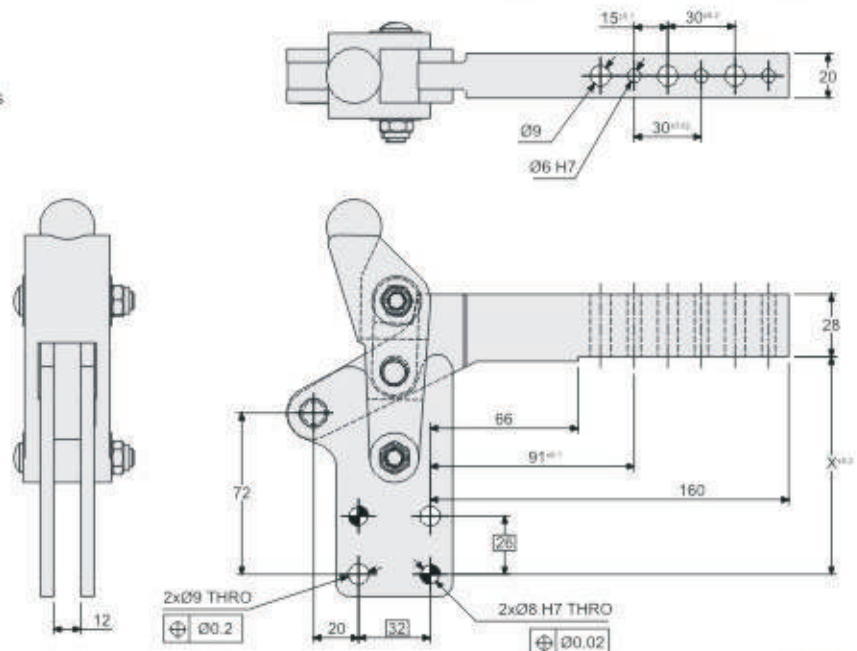
Holding pressure: 1300daN close to body

Weight: 2.0Kgs

Clamping pressure: 280daN close to body

Arm Positions: X=97 & 127

To Order: X=97: **M20-01-97**
X=127: **M20-03-127**



HORIZONTAL ACTION

MINI
CLAMPS

MH1U/UB



Material: Heavy gauge steel
Stainless steel pins and bushes

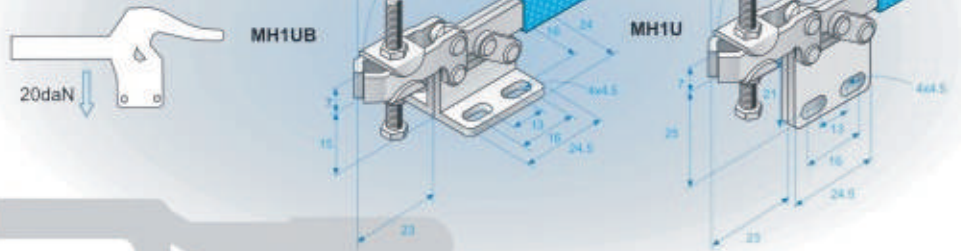
Finishing: Zinc Plated

Supplied with: 4x25mm spindles

Max Holding pressure: 60daN close to body

Weight: 0.05Kgs

Clamping pressure:



ACTUAL SIZE

MH2U/UB



Material: Heavy gauge steel
Stainless steel pins and bushes

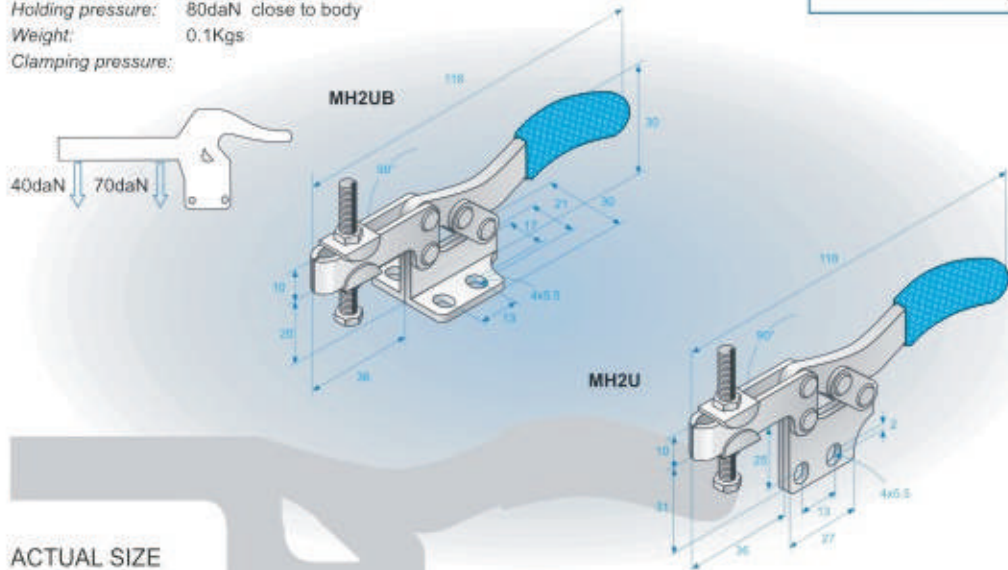
Finishing: Zinc Plated

Supplied with: 5X30mm spindles

Holding pressure: 80daN close to body

Weight: 0.1Kgs

Clamping pressure:



ACTUAL SIZE

Refer to accessory pages for further information

HORIZONTAL ACTION

MH4



Material: Heavy gauge steel
Stainless steel pins and bushes

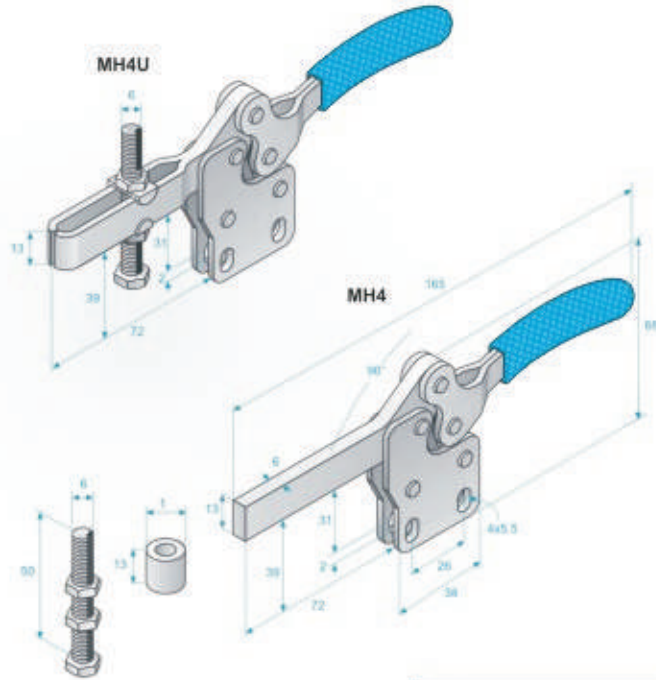
Finishing: Zinc Plated

Supplied with: 6x50mm spindles

Max Holding pressure: 155daN close to body

Weight: 0.2Kgs

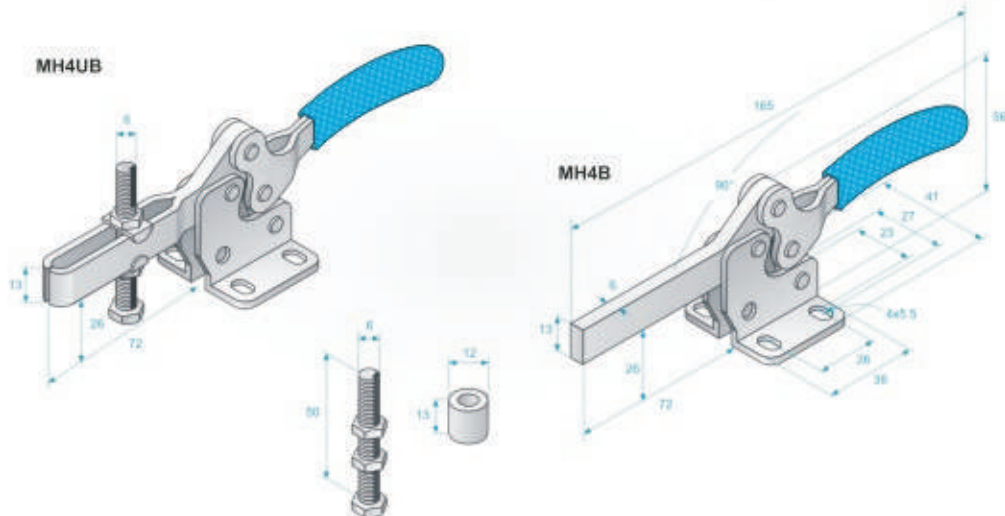
Clamping pressure:



MOUNTING PLATE

See accessories page for details

MH4B



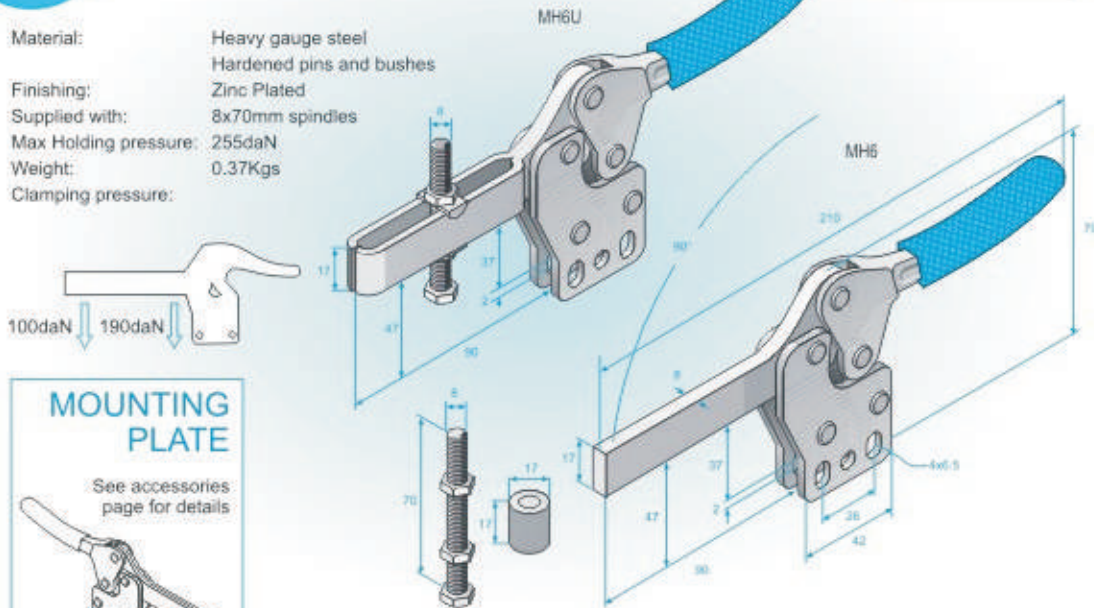
Refer to accessory pages for further information

HORIZONTAL ACTION

MH6



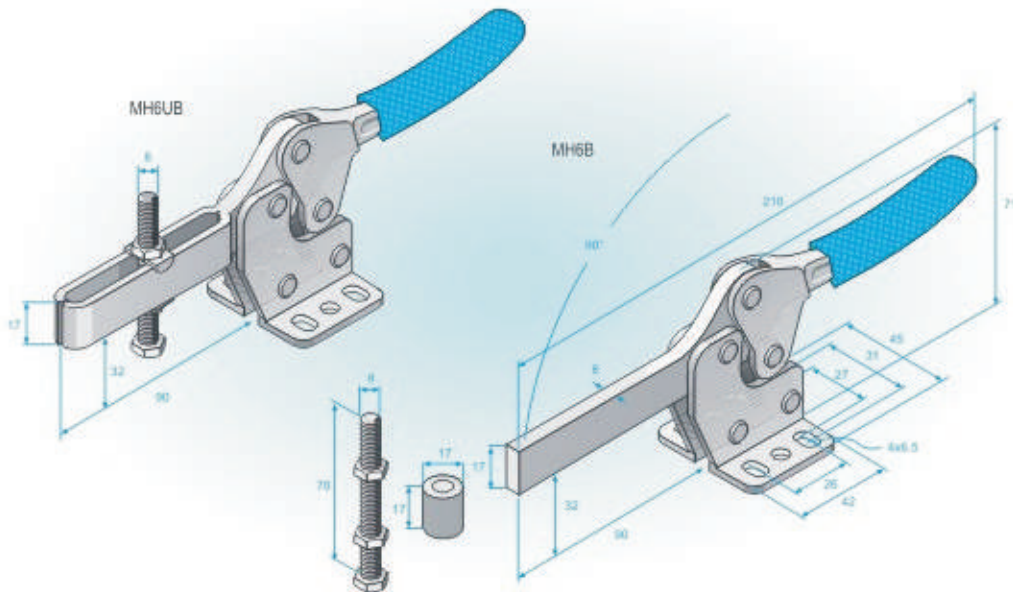
Material: Heavy gauge steel
 Hardened pins and bushes
 Finishing: Zinc Plated
 Supplied with: 8x70mm spindles
 Max Holding pressure: 255daN
 Weight: 0.37Kgs
 Clamping pressure:



MOUNTING PLATE

See accessories page for details

MH6B



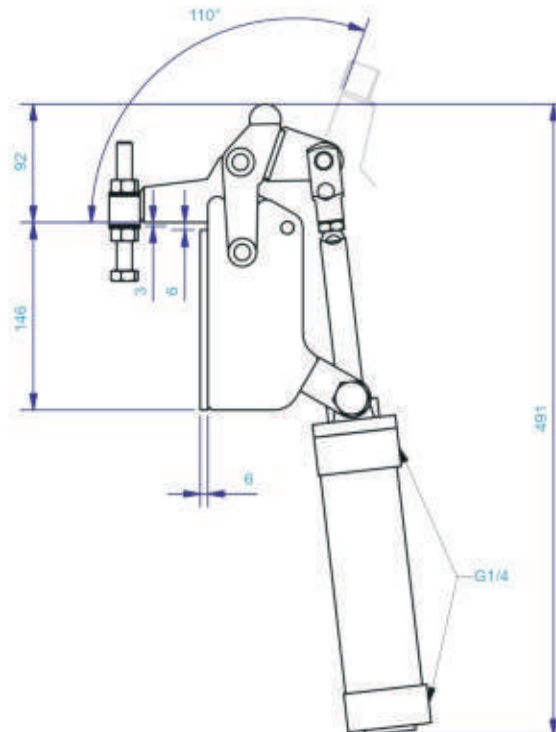
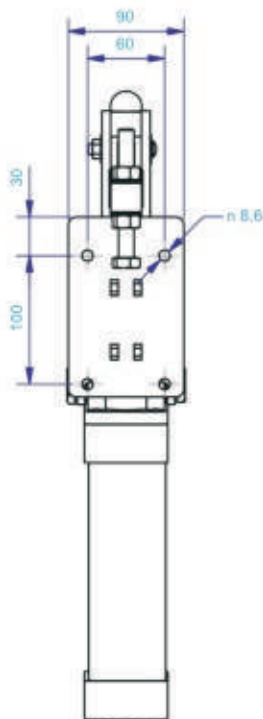
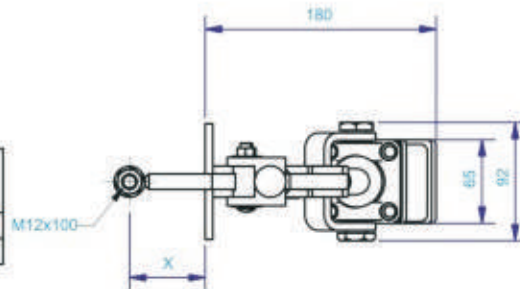
HEAVY DUTY PNEUMATIC

AV2200



Material: Heavy gauge steel
 Hardened pins and bushes
Finishing: Chemi blacked
Supplied with: 12x100mm spindle
Max Holding pressure: See table
Weight: 5.50kg

PART CODE	DIMENSION X	HOLDING FORCE
AV2200T-45	45	1,000kg
AV2200T-59	59	800kg



Refer to accessory pages for further information

HEAVY DUTY NEW ARRIVAL

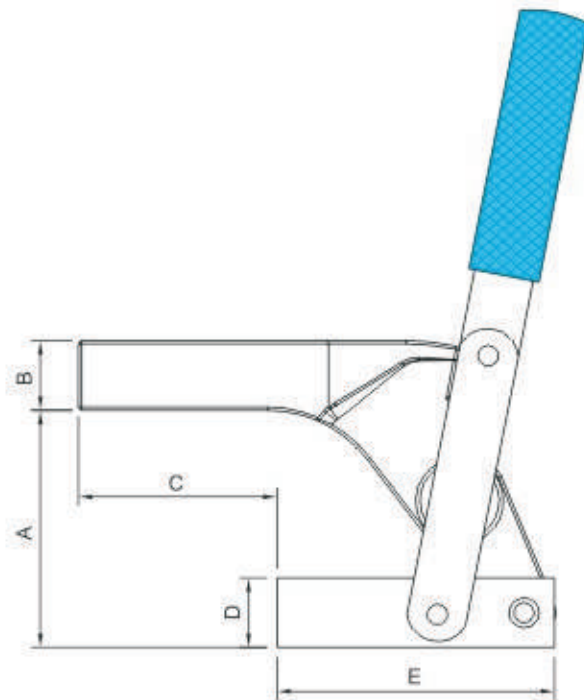
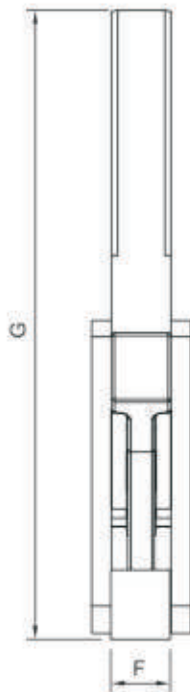
HTCH



Material - Heavy Gauge Steel

Holding Capacity

MODEL	Kg.
HTCH30	300
HTCH40	500
HTCH50	925



All Dimensions are in mm

MODEL	A	B	C	D	E	F	G	H	I
HTCH30	54.0	12.7	38.0	14.3	63.5	12.7	152.5	14.3	19.0
HTCH40	76.0	19.0	63.5	22.3	89.0	19.0	203.0	19.0	28.5
HTCH50	108.0	25.4	76.0	28.5	127.0	25.4	273.0	25.4	38.0

COPPER CARRIER

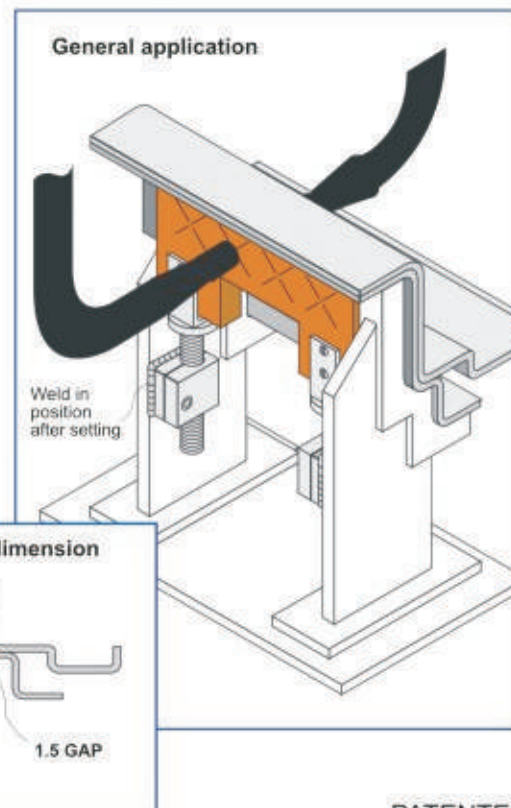
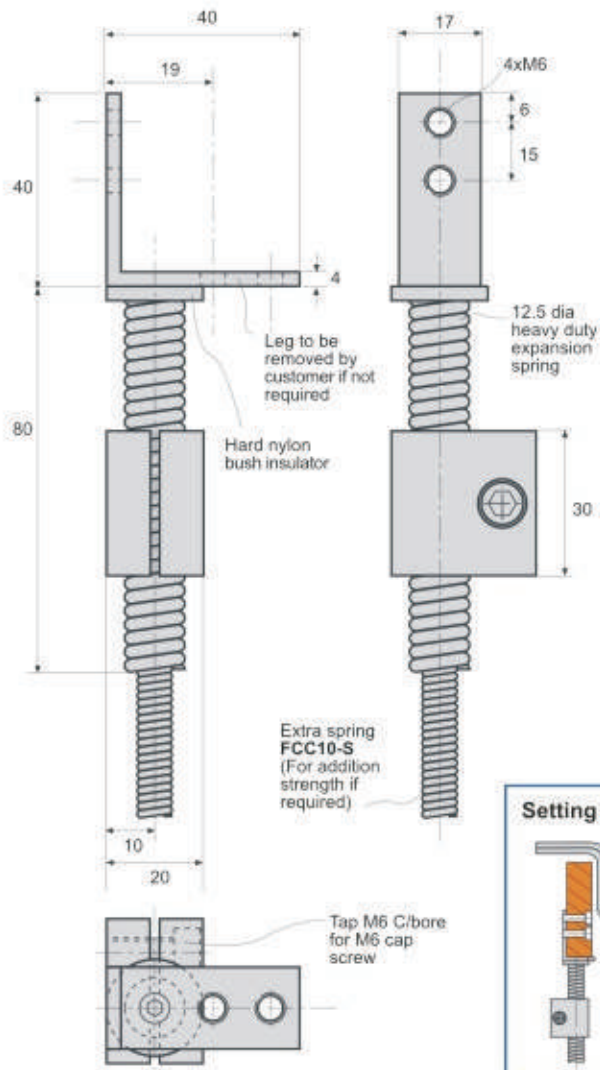
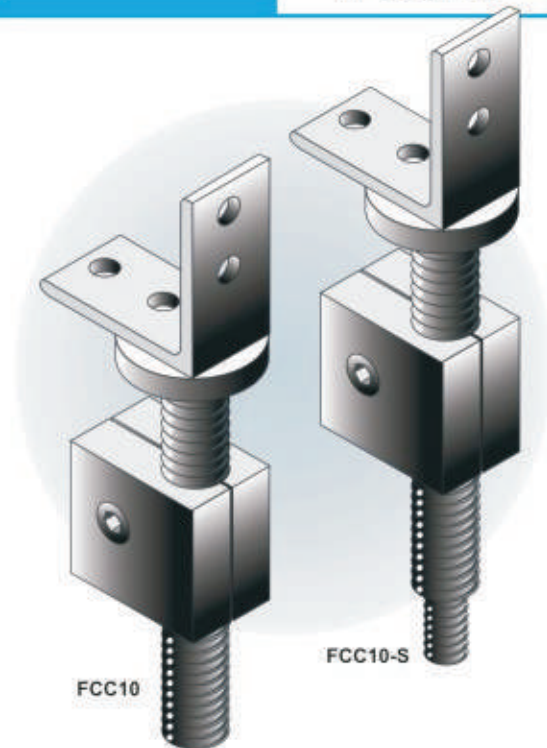
FCC10



FLEXIBLE COPPER CARRIER

These carrier units have been designed to help eliminate problems that has caused concern on spot welding applications for a considerable time... excessive wear on gun tips and poor quality welds.

The unique design enables the copper protection bar to flex to the shape of the panel contour and spring back this improves spot weld quality and greatly extends the life of the welding tips. They are in use extensively throughout the automotive industry.



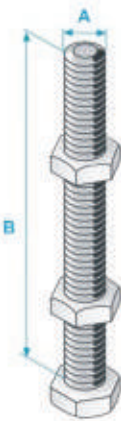
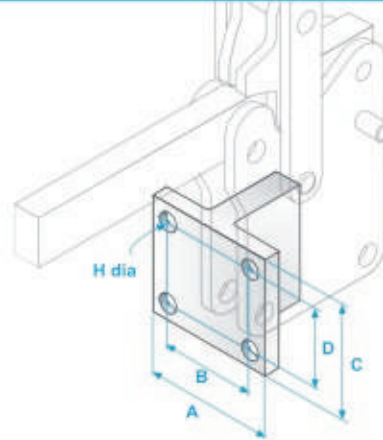
PATENTED

ACCESSORIES

Front Mounting Plates

Fix by drill and bolt or weld on assembly

ORDER CODE	A	B	C	D	H dia	TO SUIT MODELS
MP1	79	60	64	44	10.5	MG1
MP2	57	40	38	20	6.5	MG2
MP3	41	25	35	19	6.5	MG3
MP4	71	50	58	38	8.3	MG4
MP5	64	45	48	32	8.3	MG5
MP6	82	60	77	57	10.5	MG6
MP7	40	27	26	12.5	6.5	MG7
MP8	41	25	38	26	5.5	MH4
MP9	45	29	42	26	6.5	MH6
MP10	60	43	59	41	8.5	MH8
MP11	70	42	60	42	8.5	MH12

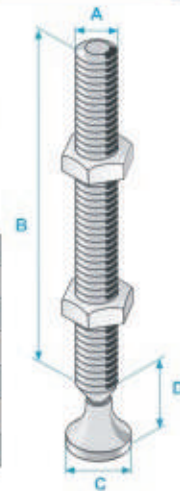


Bolt Adjustment Spindle

ORDER CODE	A	B
M640	6	40
M650	6	50
M845	8	45
M876	8	76
M1060	10	60
M1076	10	76
M1276	12	76
M12100	12	100

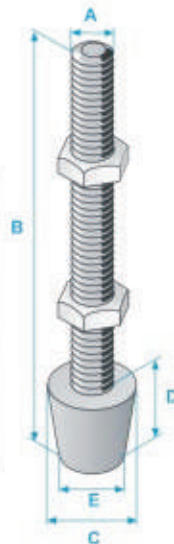
Swivel Foot Adjustment Spindle

ORDER CODE	A	B	C	D
SM665	6	50	12.5	12
SM865	8	65	17.5	18
SM885	8	85	17.5	18
SM1075	10	75	19	20
SM1265	12	65	19	20
SM1285	12	85	19	20



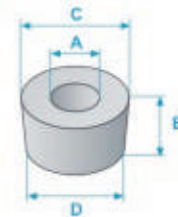
Neoprene Tipped Adjustment Spindle

ORDER CODE	A	B	C	D	E
NM645	6	45	15	12	12
NM670	6	70	15	12	12
NM875	8	75	20	16	16
NM895	8	95	20	16	16
NM1080	10	80	28	22	22
NM10100	10	100	28	22	22
NM1280	12	80	30	24	24
NM12100	12	100	30	24	24



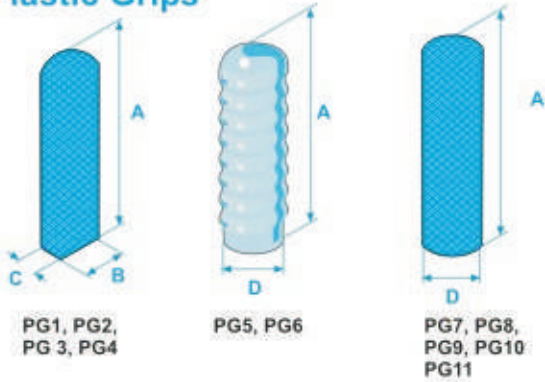
Neoprene Caps

ORDER CODE	A	B	C	ø
NP6	6	10	15	12
NP8	8	13	19	16
NP10	10	14	24	20



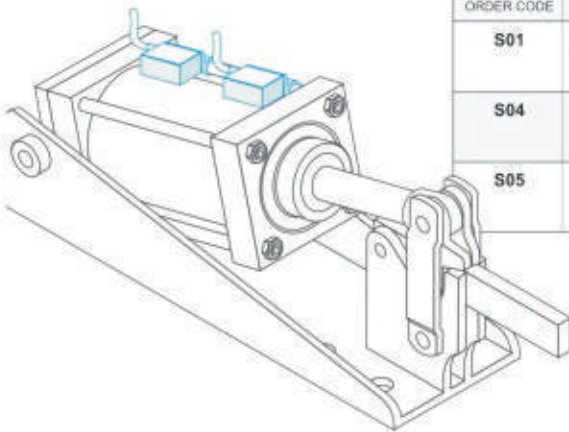
ACCESSORIES

Plastic Grips



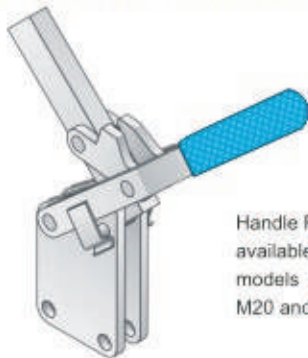
ORDER CODE	A	B	C	D	TO SUIT MODELS
PG1	26	12	5		MG 7
PG2	55	12	5		MG 3, CP9, MH4
PG3	58	14	10		PLIERS, CP8
PG4	65	13	7		MG2, HC15
PG5	100			14	MG5, MG4
PG6	105			18	MG 1, MG6, MH12, MR2, MR3, CP7, CP100, HC16, HC19
PG7	90			17	CP8/90, MR8, HC16
PG8	100			22	M19, M20
PG9	128			28	M30, M40
PG10	70			24	M18
PG11					LDC1, MR8

Stroke Sensors



ORDER CODE	SPECIFICATION	TO SUIT MODELS
S01	One switch supplied with 2m cable, non weld immune	CP8/AIR, CP7/AIR, AH500, AH3000, AV2000, AV3000, PR100/AIR, PR700/AIR
S04	One switch supplied with 2m cable, non weld immune	AH100, AH300, AH400, CP9/AIR, SC20, SC25, SC32, SC40, SC50, SC63
S05	One switch, weld immune	CP8/AIR, CP7/AIR, AH500, AH3000, AV2000, AV3000, PR100/AIR, PR700/AIR

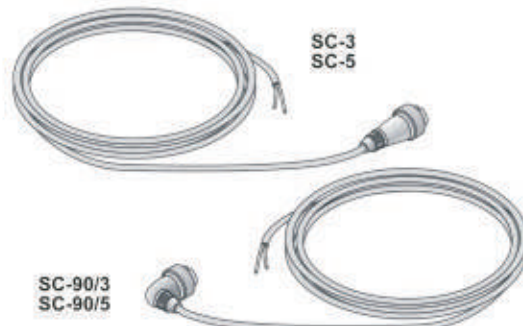
Handle Retaining Clips



Handle Retaining Clips available on request for models MG1, MG6, M19, M20 and M30.

Sensor cable

ORDER CODE	LENGTH	SPECIFICATION	TO SUIT MODEL
SC-3	3m	4 pin, weld immune switch cable, with straight connector	S05
SC-5	5m		
SC-90/3	3m	4 pin, weld immune switch cable, with 90° connector	S05
SC-90/5	5m		



Toggle Clamps - *General Introduction*



SANDFIELD ENGINEERING COMPANY PVT. LTD.

Plot No. D1/37, Opp. Hardy Spicer Co., M.I.D.C. Ambad, Nashik 422010, INDIA.

Tel/Fax : 0253 2381390 Mob.: 9225142432

Email : info@sandfieldclamps.co.in Website : www.sandfieldclamps.co.in